



---

**FLEXIBLE  
SAFETY  
BARRIERS**

---

MARCH  
2026



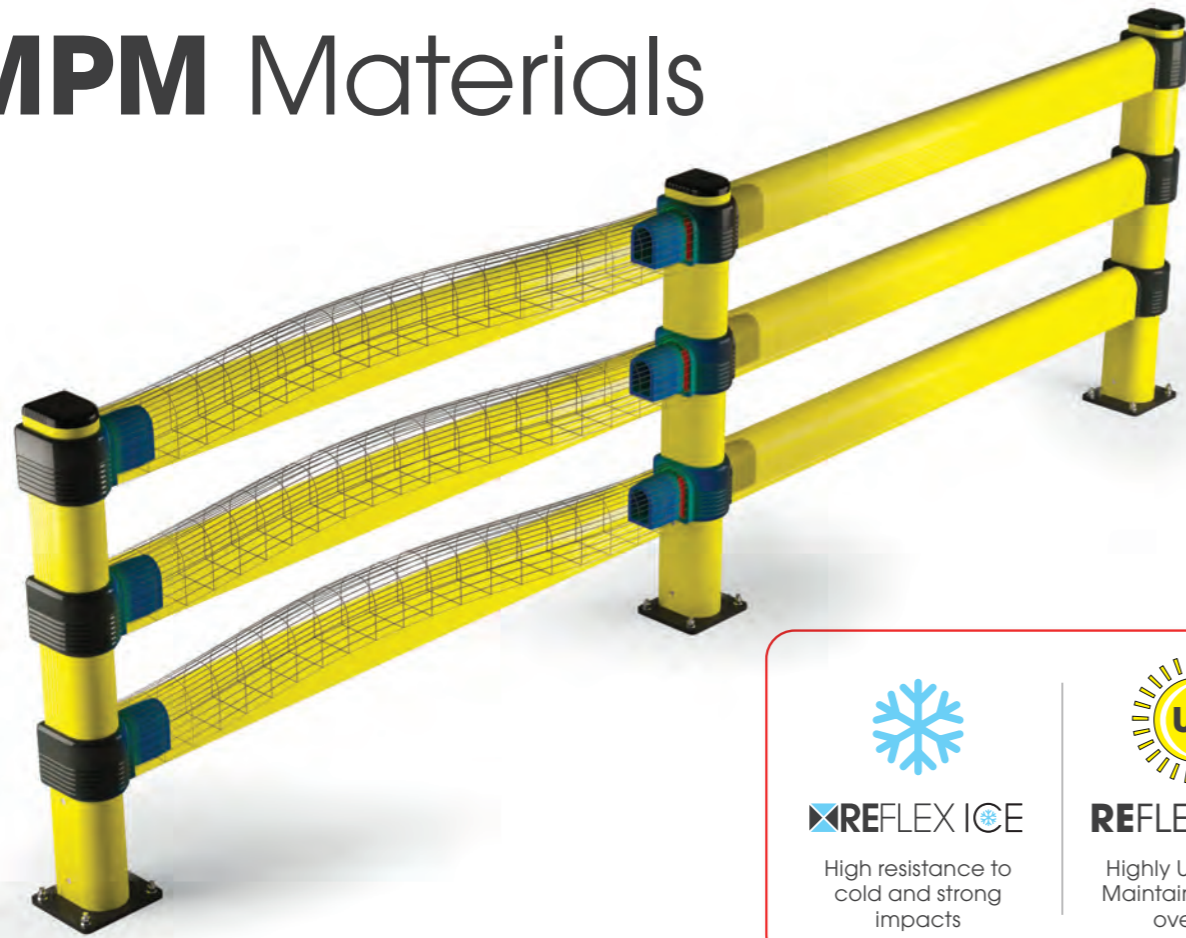
## CONTENTS

---

01	<b>Rack Protections</b>	page 13	09	<b>Loading Bay Protections</b>	page 65
02	<b>Bollards</b>	page 21	10	<b>Column Protections</b>	page 71
03	<b>Cold Line</b>	page 27	11	<b>Corner Protections</b>	page 77
04	<b>Ground Level Protections</b>	page 35	12	<b>Kerb</b>	page 81
05	<b>Traffic Barriers</b>	page 41	13	<b>Wall Protections</b>	page 85
06	<b>Pedestrian Barriers</b>	page 45	14	<b>Accessories</b>	page 91
07	<b>Gates</b>	page 55	15	<b>Tech Solutions</b>	page 101
08	<b>Industrial Door Protections</b>	page 61			



# MPM Materials



**NEW**

**REFLEX ICE**

High resistance to cold and strong impacts

**REFLEX ALFA**

Highly UV-resistant  
Maintains its colour over time

**REFLEX**  
RESISTANT AND FLEXIBLE

**FROSTEX**  
RESISTANT TO LOW TEMPERATURES

 Durability Through Time	 High Flexibility	 Compliance With EU Directive 2015/863 (ROHS)
 100% Recyclable	 Self Extinguishing V0	 Anti-scratch Material
 Coloured Material. No Repainting Required	 Easy To Clean	 Mold Resistant
 Non-toxic	 Resistant to Chemicals	 Resistant to Humidity & Saline Substances

 Temperature Range: -30° + 50° C	 High Flexibility	 Compliance With EU Directive 2015/863 (ROHS)
 100% Recyclable	 HB Flammability rating according to UL 94	 Suitable for food contact
 Coloured Material. No Repainting Required	 Resistant to Chemicals	 Mold Resistant
 Non-toxic	 Resistant to Humidity & Saline Substances	

# FIRE CERTIFICATION FOR MPM REFLEX

**NEWS**

OUR POLYMER CONFIRMS THE V0 SELF-EXTINGUISHING CLASS

MPM barriers are classified as V0, according to the international UL94 standard. Reflex technopolymer Protections:

- Low fire risk;
  - Self-extinguishing;
  - Don't spread flames and stop burning within few seconds.
- The installation of our barriers lowers fire risk compared to other barriers made of alternative polymers, not V0-Classified.

Le barriere MPM sono classificate V0, secondo lo standard internazionale UL94. Le protezioni in tecnopolimero Reflex:

- Hanno un basso carico d'incendio;
- Sono autoestinguenti;
- Non propagano la fiamma e smettono di bruciare entro pochi secondi.

L'installazione delle nostre barriere riduce il carico d'incendio rispetto ad altre barriere in polimeri alternativi, non classificati V0.

Les barrières MPM sont classées V0, selon la norme internationale UL94. Les protections en technopolymère Reflex:

- Elles ont une charge d'incendie minimale;
- Elles sont auto-extinguibles;
- Elles ne propagent pas la flamme et cessent de brûler en quelques secondes.

La présence de nos barrières réduit la charge d'incendie par rapport à d'autres barrières en polymères alternatifs, non classées V0.

Las barreras MPM están clasificadas como V0, según la norma internacional UL94. Las protecciones de tecnopolímero Reflex:

- Tienen una baja carga de fuego;
  - Son autoextinguibles;
  - No propagan la llama y dejan de arder en unos segundos.
- La instalación de nuestras barreras reduce la carga de fuego en comparación con otras barreras de polímero alternativas, no clasificadas como V0.



**REFLEX**  
RESISTANT AND FLEXIBLE

IS FIRE RESISTANT  
**CLASS V-0**



**At MPM, we believe in a safer future from every perspective.**

**We produce solutions to keep people safe under all circumstances, and that's why we commit to making our production processes increasingly more sustainable.**

# MPM Green

We are a "closed-loop" company, connected to a network of external businesses that allows us to eliminate waste from our production chain by recycling the "excess" and processing it to give it new life.

All of our products become useful, one way or the other, and waste is always avoided.

Siamo un'azienda a "circuito chiuso", collegata a una rete di imprese esterne che ci permette di eliminare gli sprechi dalla nostra catena di produzione riciclando le "eccedenze" e trattandole per dar loro una nuova vita.

Tutti i nostri prodotti diventano utili, in un modo o nell'altro, e gli sprechi sono sempre evitati.

Nous sommes une entreprise en "circuit fermé", connectée à un réseau d'entreprises externes. Nous recyclons les excédents de production pour leur donner une nouvelle vie, évitant ainsi les déchets.

Tous nos produits trouvent une utilité dans ce processus.

Somos una empresa en "circuito cerrado", conectada a una red de negocios externos. Reciclamos los excesos de producción para darles nueva vida, evitando desperdicios y promoviendo la sostenibilidad ambiental.

Todos nuestros productos encuentran utilidad en este proceso.



## WATER USAGE

All water used is internally recycled to reduce pollution and maximize its utilization.

Tutta l'acqua usata è internamente riciclata per ridurre l'inquinamento e massimizzarne l'utilizzo.

Toute l'eau utilisée est recyclée en interne pour réduire la pollution et maximiser son utilisation.

Todo el agua utilizada se recicla internamente para reducir la contaminación y maximizar su uso.



## ZERO WASTE GOAL

Our products are crafted from 100% recyclable, non-toxic materials.

I nostri prodotti sono realizzati con materiali al 100% riciclabili e non tossici.

Nos produits sont fabriqués avec des matériaux 100% recyclables et non toxiques.

Nuestros productos están hechos de materiales 100% reciclables y no tóxicos.



## CLEAN ENERGY

Our Italian facilities rely on solar power, cutting carbon emissions.

Le nostre strutture in Italia usano energia solare, tagliando le emissioni di carbonio.

Nos installations italiennes fonctionnent à l'énergie solaire, ce qui réduit les émissions de carbone.

Nuestras instalaciones en Italia utilizan energía solar, reduciendo las emisiones de carbono.

# MPM Systems

## Innovation made simple

With our innovative complementary systems you can customize your solutions.

Con i nostri innovativi sistemi complementari puoi personalizzare le tue soluzioni.

Avec nos systèmes complémentaires innovants, vous pouvez personnaliser vos solutions.

Con nuestros sistemas complementarios innovadores, puedes personalizar tus soluciones.

## LINK

Customize crossbar height at any time

Personalizza l'altezza del traverso in qualsiasi momento

Personnalisez la hauteur de la barre transversale à tout moment

Personaliza la altura de la barra transversal en cualquier momento



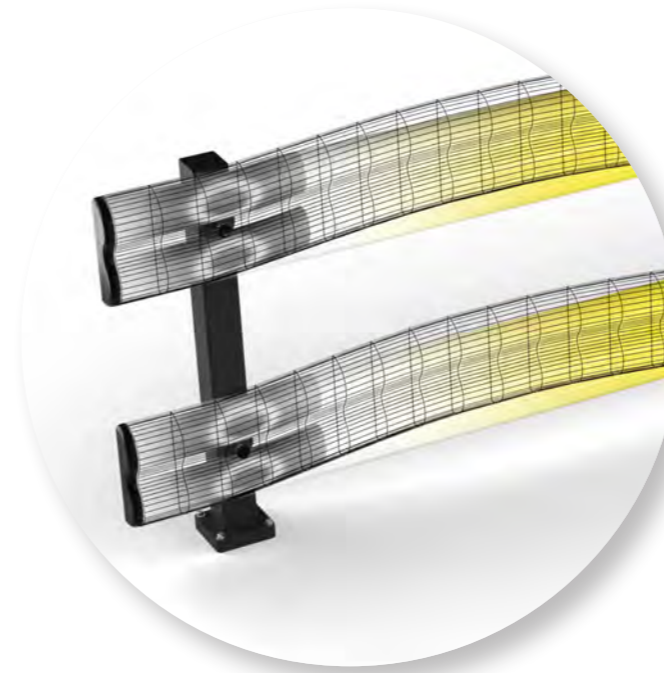
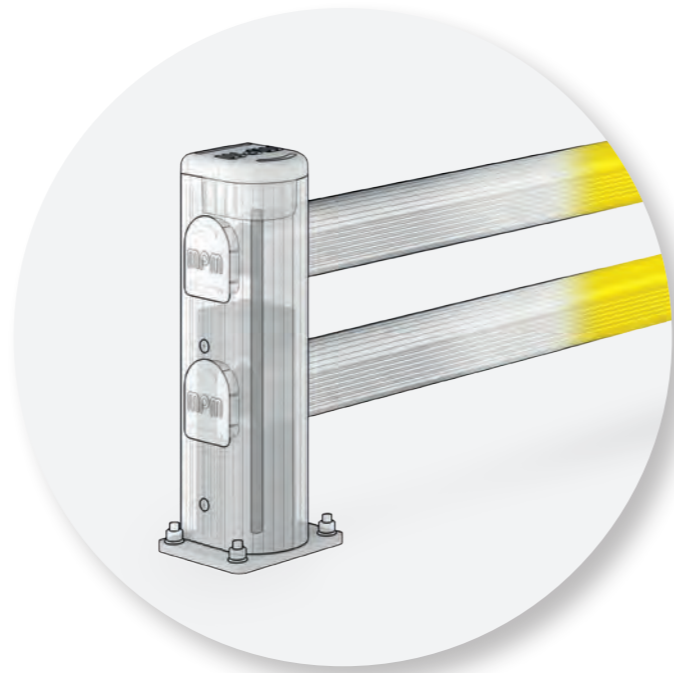
## STANDARD

Our STANDARD system is simple and intuitive to use thanks to its few components.

Il nostro sistema STANDARD è semplice e intuitivo da usare grazie alle poche componenti.

Notre système STANDARD est simple et intuitif à utiliser grâce à ses quelques composants.

Nuestro sistema estándar es simple e intuitivo de usar gracias a sus pocas componentes.



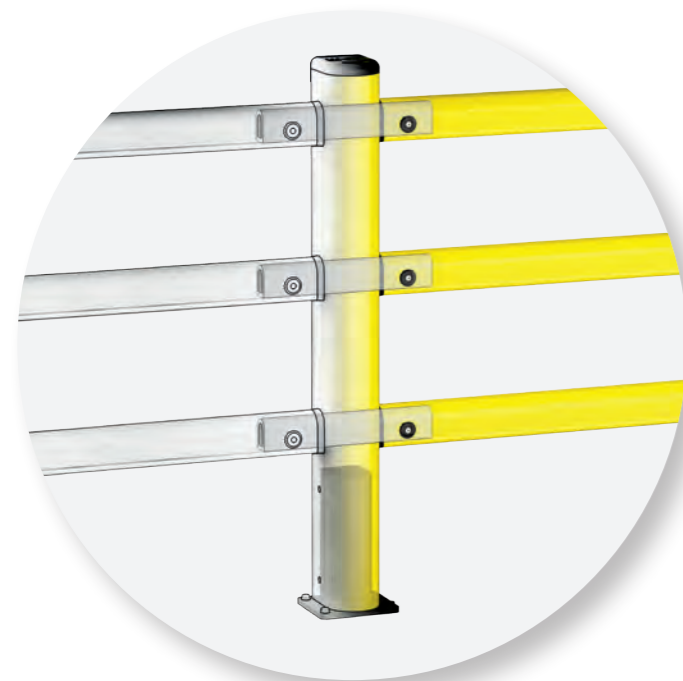
## B-FLEX

Protection system with a reinforced profile, twice as flexible and shock-absorbent.

Sistema di protezioni con profilo rinforzato, doppiamente flessibile e assorbente.

Système de protection avec profil renforcé, doublement flexible et absorbant.

Sistema de protección con perfil reforzado, más flexible y capaz de absorber perfectamente los impactos.



## PIN

Enhanced strength and greater impact absorption

Maggiore resistenza e maggiore assorbimento degli impatti

Résistance accrue et absorption des chocs

Mayor resistencia y absorción de impactos

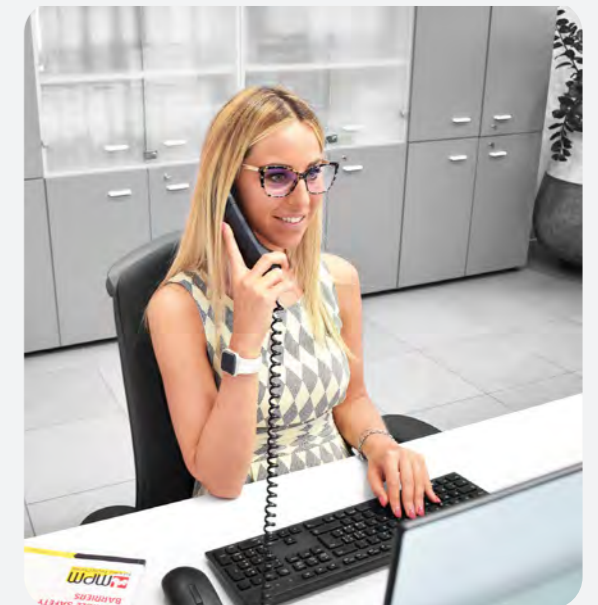
## Discover our systems!

Ask our team how to best use these innovative systems to meet your safety needs.

Chiedi al nostro team come utilizzare al meglio questi sistemi innovativi per soddisfare le tue esigenze di sicurezza.

Demandez à notre équipe comment utiliser au mieux ces systèmes innovants pour répondre à vos besoins en matière de sécurité.

Pregunta a nuestro equipo cómo utilizar de la mejor manera estos sistemas innovadores para satisfacer tus necesidades de seguridad.





## OUR PROFILES FIT ALL RACKS

Full range of technopolymer profiles for protection of rackings.

Gamma completa di profili in tecnopolimero per la protezione delle scaffalature.

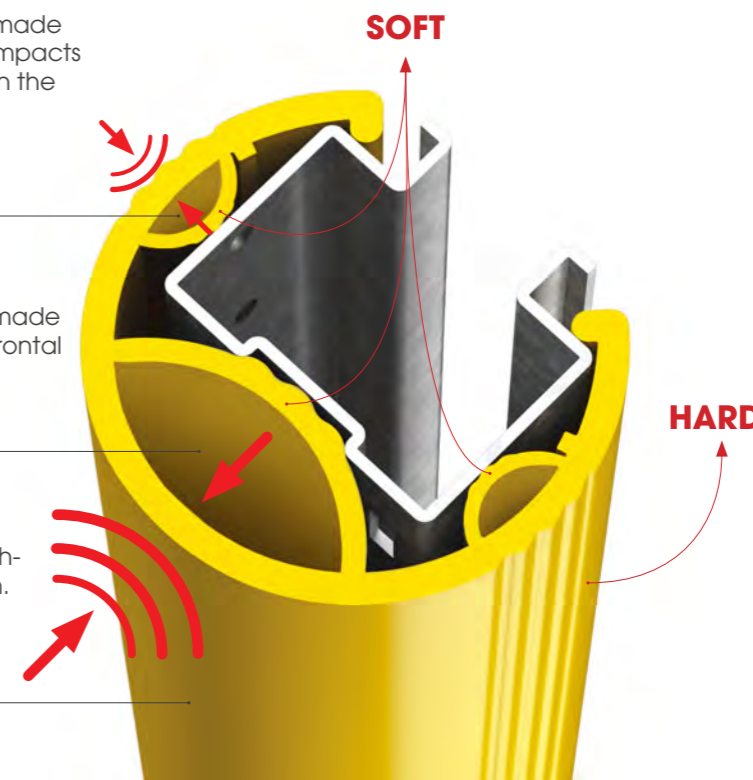
Complète gamme de profilés en tecnopolimère pour la protection d'étagères.

Gama completa de perfiles de tecnopolímeros para las protecciones de estanterías.

Two side shock absorbers made of soft material to absorb impacts during pallet placement on the shelf.

A central shock absorber made of soft material to absorb frontal impacts.

Hard outer coating, scratch-resistant and easy to clean.



# RACK PROTECTOR

Available for



EASY TO INSTALL  
WITH RP CLICK



SOFT MATERIAL  
INSIDE

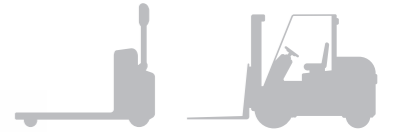


CUSTOMIZED  
SOLUTIONS TO  
FIT ALL UPRIGHTS



# TECHNICAL RACK

Available for



RESISTANT TO  
LOW TEMPERATURES

EASY TO  
INSTALL WITH

HOOK  
AND LOOP  
CLOSURE



**RPS**



Model **Small**  
Height **400, 600 mm**  
Packing **6 pcs / box**  
Packing **115 pcs / big parcel**  
Colour ●

**RPM**



Model **Medium**  
Height **400, 600 mm**  
Packing **4 pcs / box**  
Packing **80 pcs / big parcel**  
Colour ●

**RPL**



Model **Large**  
Height **400, 600 mm**  
Packing **2 pcs / box**  
Packing **52 pcs / big parcel**  
Colour ●

**RPL XL**



Model **Extra Large**  
Height **600 mm**  
Packing **To be defined**  
Colour ●

**TRS**



Model **Small**  
Height **550 mm**  
Packing **15 pcs / box**  
Packing **120 pcs / big parcel**  
Colour ●

**TRM**



Model **Medium**  
Height **550 mm**  
Packing **12 pcs / box**  
Packing **96 pcs / big parcel**  
Colour ●

**TRL**



Model **Large**  
Height **550 mm**  
Packing **9 pcs / box**  
Packing **72 pcs / big parcel**  
Colour ●

# RACK CORNER

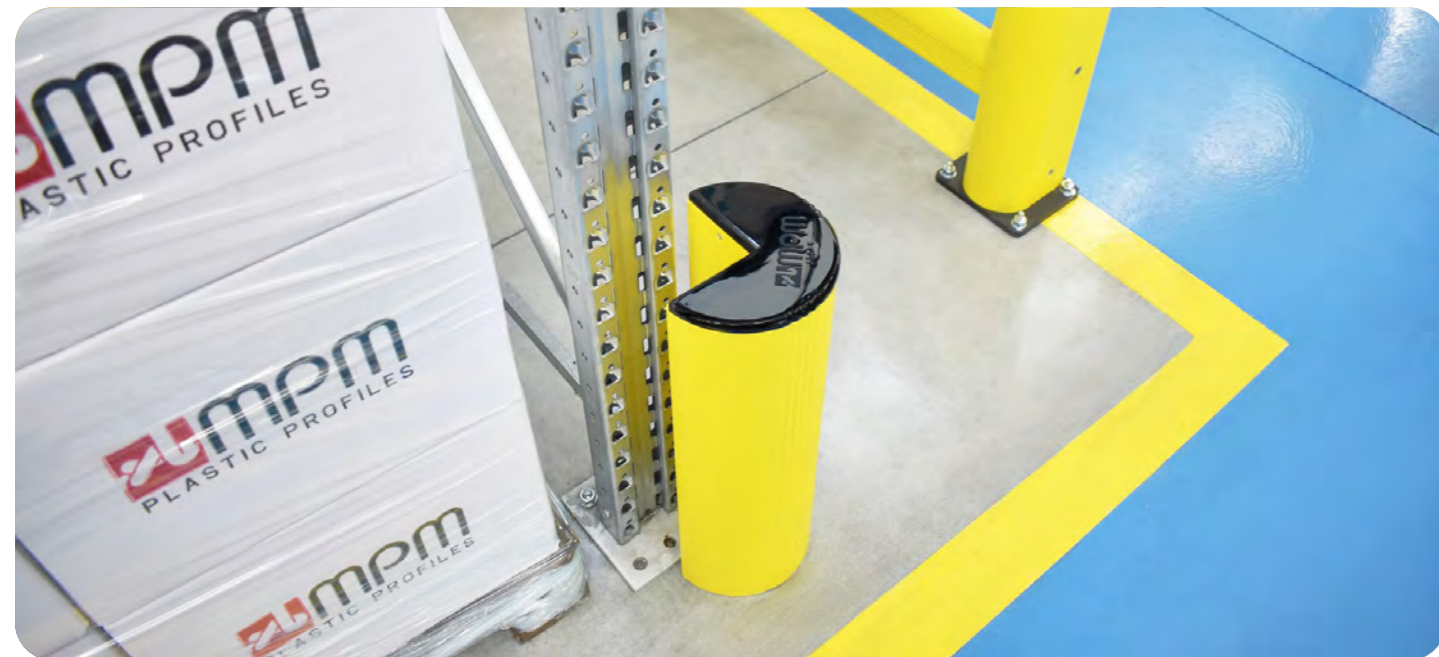


RACK CORNER



Heavy Load

Height **500 mm**  
 Fixing **Included**  
 Colour



# LM



Ask us about our **2-UNITS RACK END BARRIER** going up to 4000mm width

SM RE



Light Load

Height **350 mm**  
 Width **250 - 1500 mm (50 increments)**  
 Fixing **Included**  
 Colour

LM RE



Heavy Load

Height **420 mm**  
 Width **250 - 2400 mm (50 increments)**  
 Fixing **Included**  
 Colour

LINK SINGLE RE



Heavy Load

Height **500, 800 mm**  
 Width **400 - 2400 mm (50 increments)**  
 Fixing **Included**  
 Colour

LM/1 LINK RE



Heavy Load

Height **420 mm**  
 Width **400 - 2400 mm (50 increments)**  
 Fixing **Included**  
 Colour

LINK LM RE



Heavy Load

Height **500, 800 mm**  
 Width **400 - 2400 mm (50 increments)**  
 Fixing **Included**  
 Colour



# FENCE



**FENCE 90**



Light Load

Height **400 mm**  
Width **300 - 2400 mm**  
(50 increments)  
Fixing **Included**  
Colour **● ●**

**FENCE 150**



Heavy Load

Height **550 mm**  
Width **400 - 2400 mm**  
(50 increments)  
Fixing **Included**  
Colour **● ●**

**FENCE 150 REF**



Heavy Load

Height **550 mm**  
Width **400 - 2400 mm**  
(50 increments)  
Fixing **Included**  
Colour **● ●**

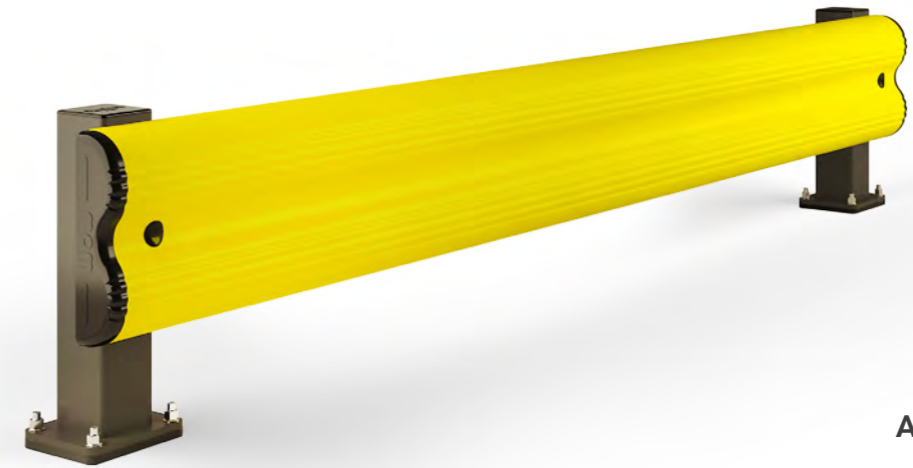
**FENCE LINK**



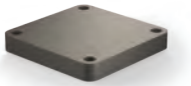
Heavy Load

Height **550 mm**  
Width **400 - 2400 mm**  
(50 increments)  
Fixing **Included**  
Colour **● ●**

# BFLEX



**SHOCK  
ABSORBER PAD**



**INCLUDED**

**BFLEX.FRONT/1 RE**



Heavy Load

Height **450 mm**  
Width **250 - 2400 mm**  
(50 increments)  
Fixing **Included**  
Colour **●**

**BFLEX.COM/1 RE**



Heavy Load

Height **450 mm**  
Width **550 - 2400 mm**  
(50 increments)  
Fixing **Included**  
Colour **●**



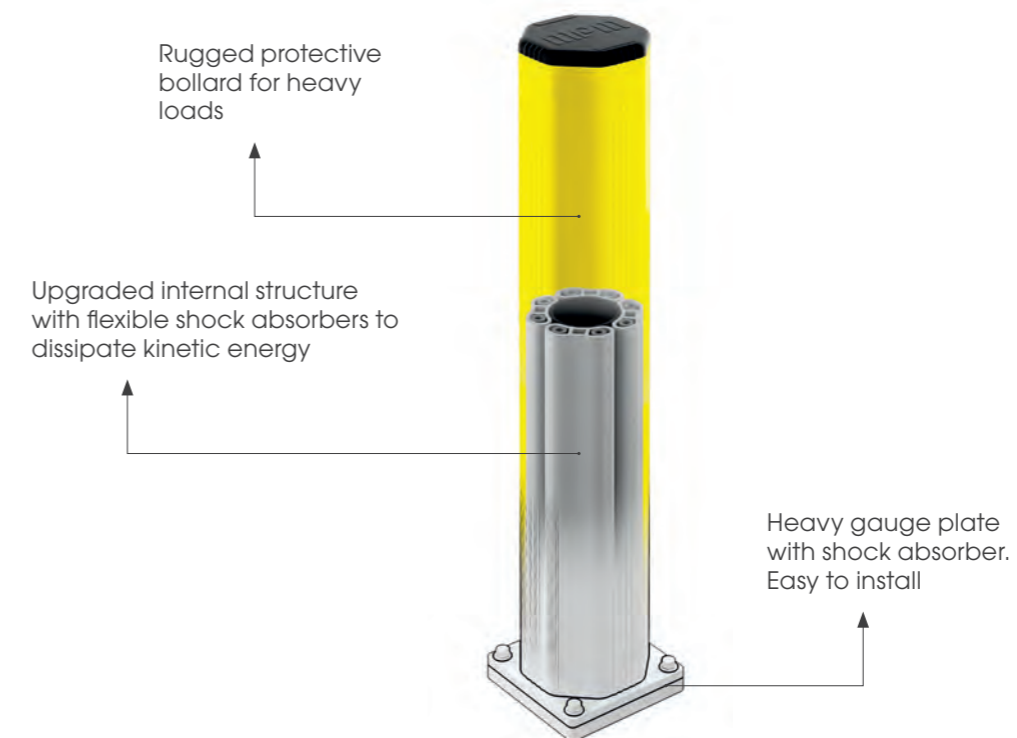


Designed to protect gates, doors and all sensible structures in warehouses and logistic areas.

Progettati per proteggere cancelli, porte e tutte le strutture sensibili in magazzini e aree logistiche.

Conçus pour protéger les portails, les portes et toutes les structures sensibles dans les entrepôts et les zones logistiques.

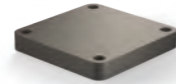
Diseñados para proteger puertas, portones y todas las estructuras sensibles en almacenes y áreas logísticas.



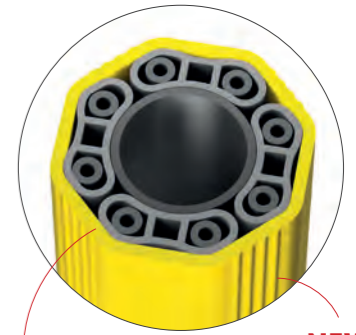
# GRD



SHOCK  
ABSORBER PAD

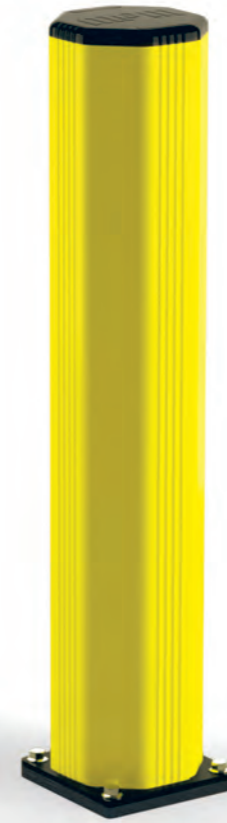


INCLUDED  
FOR PLUS



FLEXIBLE

NEW  
ANTISHOCK  
BUMPER



## GRD 90



Light Load

Height **250, 1150 mm**  
Fixing **Included**  
Colour **● ●**

## GRD 150



Heavy Load

Height **500, 800, 1150 mm**  
Fixing **Included**  
Colour **● ●**

## GRD 150 PLUS



Heavy Load

Height **500, 800, 1150 mm**  
Fixing **Included**  
Colour **● ●**

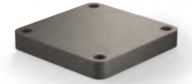
## GRD 200



Heavy Load

Height **800, 1200, 2000 mm**  
Fixing **Included**  
Colour **●**

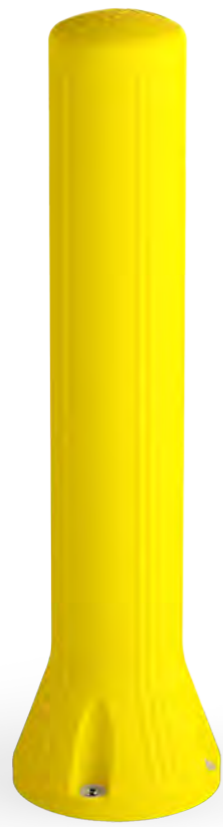
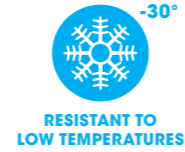
SHOCK  
ABSORBER PAD



INCLUDED



# ROCKET BOLLARD



ROCKET BOLLARD 150



ROCKET BOLLARD 200



Heavy Load

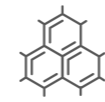
Height **500 mm**  
Fixing **Included**  
Colour **●**

Heavy Load

Height **800, 1200 mm**  
Fixing **Included**  
Colour **●**



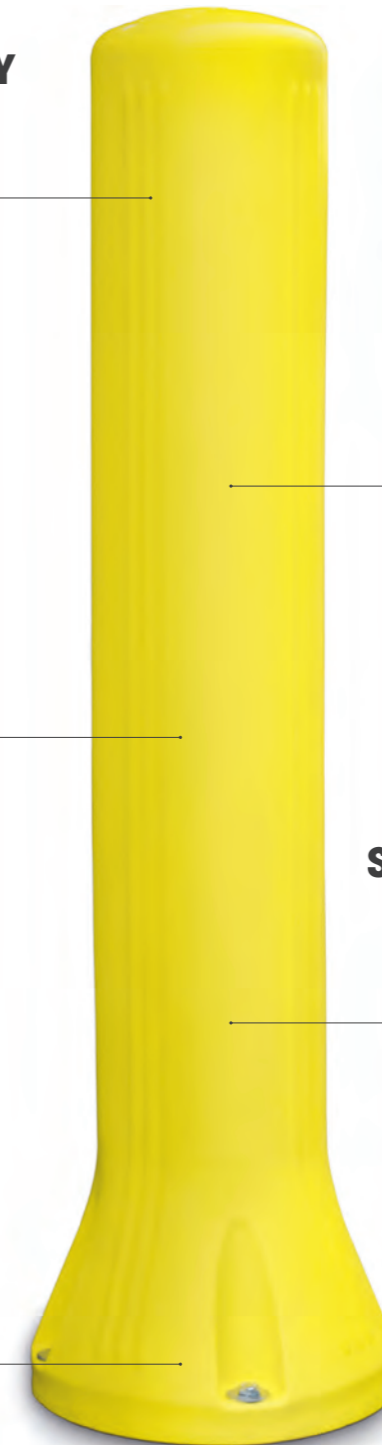
**NEW TECHNOLOGY**



**INNOVATIVE MATERIAL**



**NO METAL PLATE**



**RESISTANT TO LOW TEMPERATURES**



**SINGLE-COMPONENT DESIGN**



**The Bollard that absorbs impacts best, reducing recoil for forklift drivers.**

**Better Floor Protection**

**No issues in Corrosive or high-salinity Environments**

**Improved Hygiene**

**Patented Product**



**REFLEX ICE**  
**FROSTEX**  
 RESISTANT TO LOW TEMPERATURES

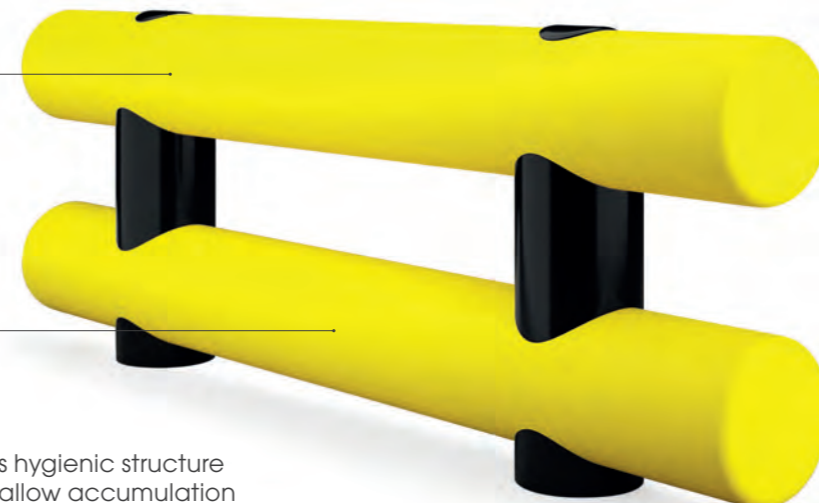
Specific solutions for protection of environments with negative temperatures. They are suitable to protect corners, entrances, gates, panels and walls in cold rooms

Soluzioni specifiche per la protezione di ambienti a temperatura negativa. Ideali per proteggere angoli sporgenti, accessi e portoni, pannelli e pareti di celle frigorifere.

Solutions spécifiques pour la protection des environnements à température négative. Idéal pour protéger les angles, les entrées et les portes, les panneaux et les murs des chambres froides.

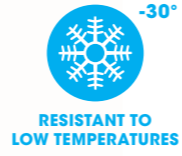
Soluciones específicas para proteger los entornos de temperatura negativa. Son ideales para proteger esquinas, entradas y puertas, paneles y paredes de las cámaras frigoríficas.

Suitable for the food industry



Thanks to its hygienic structure it does not allow accumulation of dirt and bacteria

# ROD



ROD 70



ROD 120

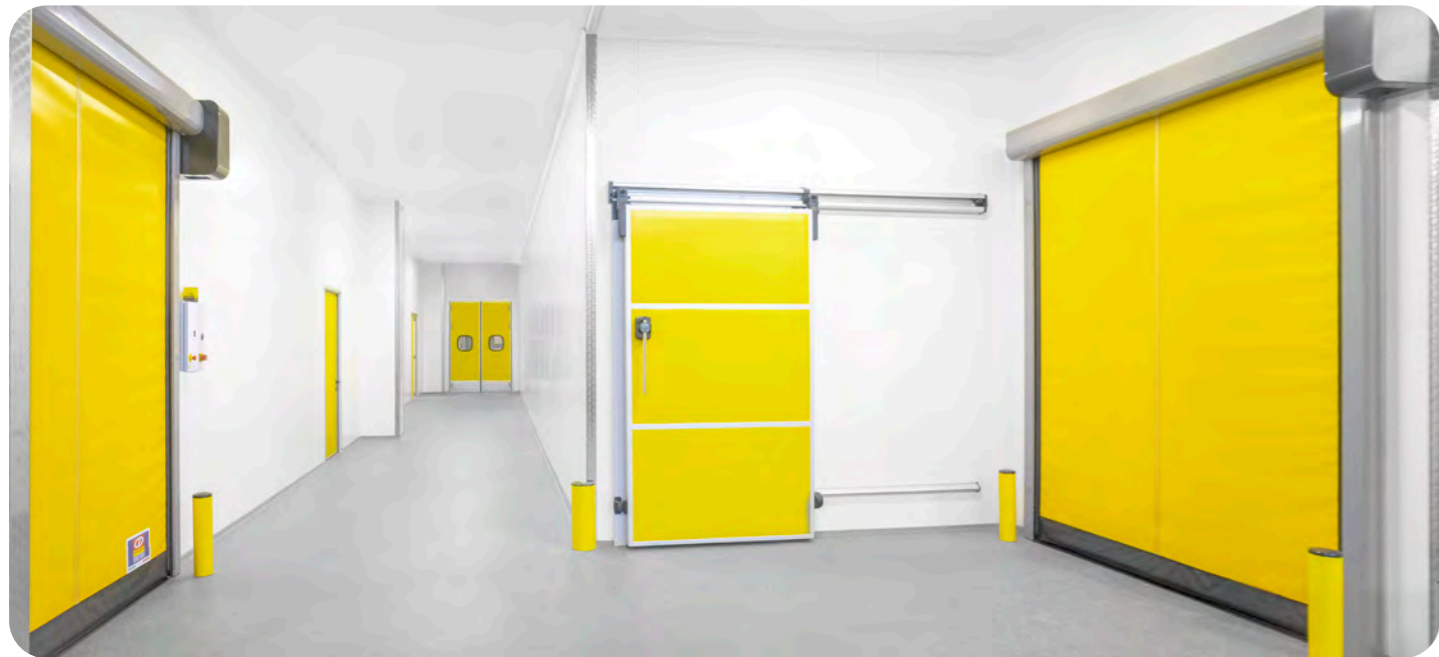


Light Load

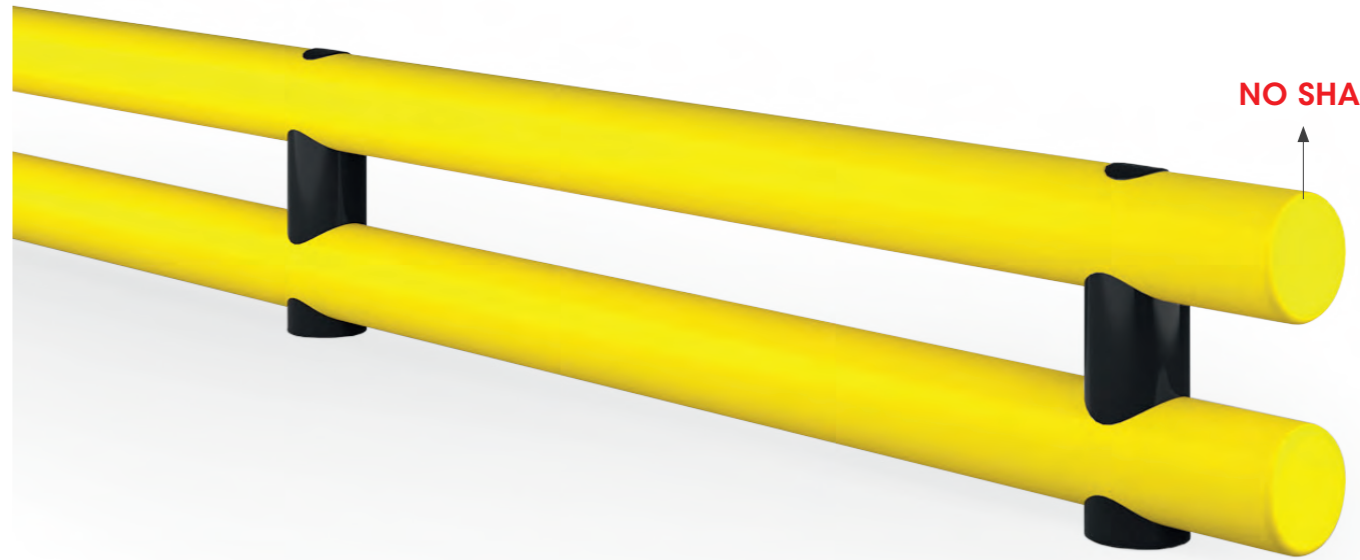
Height **266 mm**  
Fixing **Included**  
Colour ●

Heavy Load

Height **433, 560, 800 mm**  
Fixing **Included**  
Colour ●



# ROD FLOOR



NO SHARP EDGES

RF 70



RF 100



RF 120



RF 120 DOUBLE



Light Load

Height **110 mm**  
Length **500, 1000, 1500, 2000, 3000 mm**  
Fixing **Included**  
Colour ●

Heavy Load

Height **135 mm**  
Length **500, 1000, 1500, 2000, 3000 mm**  
Fixing **Included**  
Colour ●

Heavy Load

Height **140 mm**  
Length **500, 1000, 1100, 1500, 2000, 2500, 3000 mm**  
Fixing **Included**  
Colour ●

Heavy Load

Height **400 mm**  
Length **500, 1000, 1100, 1500, 2000, 2500, 3000 mm**  
Fixing **Included**  
Colour ●



# RACK PROTECTOR ICE

Available for



**NEW MATERIAL**

**REFLEX ICE**



**EASY TO INSTALL WITH RP CLICK**



**-30°**  
**RESISTANT TO LOW TEMPERATURES**



Temperature Range:  
-30° +10° C

100 years  
Durability Through Time

High Flexibility

**RoHS compliant**  
Compliance With EU Directive 2015/863 (ROHS)

100% Recyclable

Self Extinguishing V0

Anti-scratch Material

Coloured Material. No Repainting Required

Easy To Clean

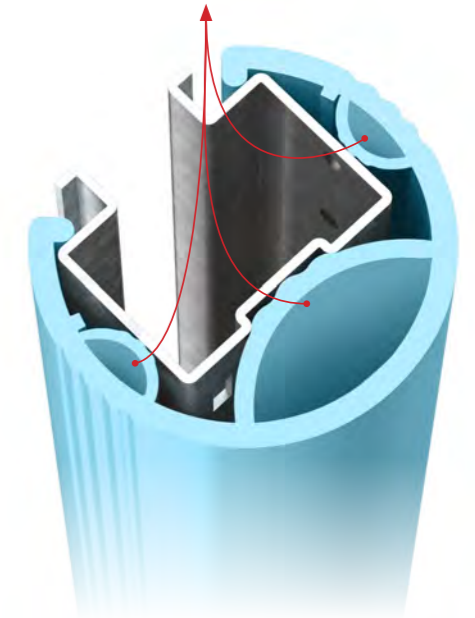
Mold Resistant

Non-toxic

Resistant to Chemicals

Resistant to Humidity & Saline Substances

**SOFT MATERIAL INSIDE**



**CUSTOMIZED SOLUTIONS TO FIT ALL UPRIGHTS**

**RPS ICE**



Model **Small**  
Height **400, 600 mm**  
Packing **6 pcs / box**  
Packing **115 pcs / big parcel**  
Colour **Blue**

**RPM ICE**



Model **Medium**  
Height **400, 600 mm**  
Packing **4 pcs / box**  
Packing **80 pcs / big parcel**  
Colour **Blue**

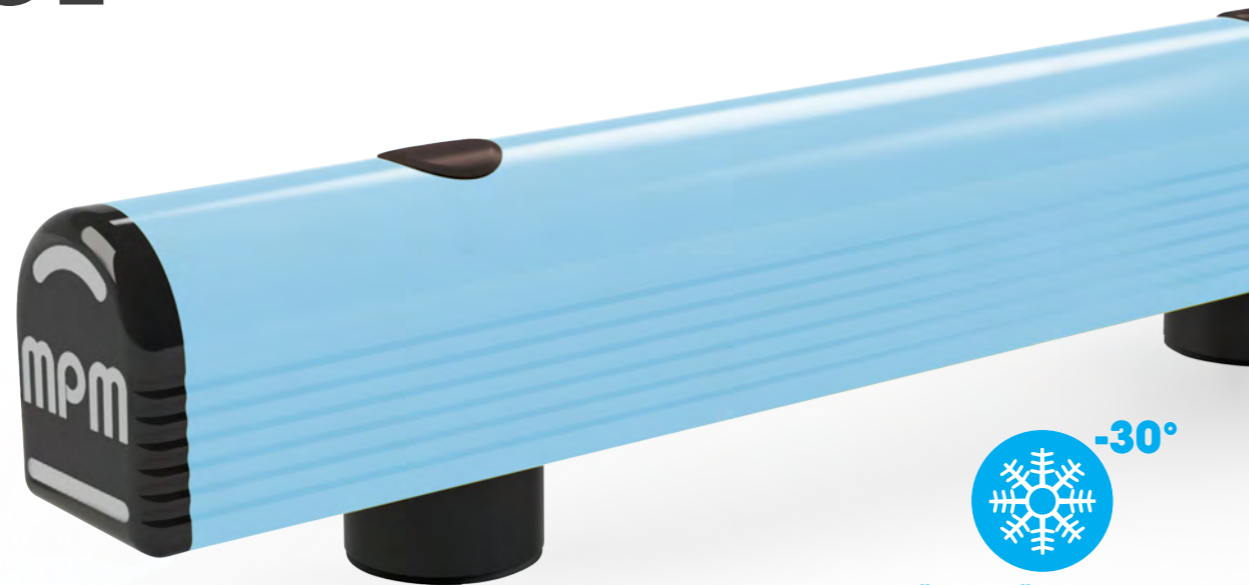
**RPL ICE**



Model **Large**  
Height **400, 600 mm**  
Packing **2 pcs / box**  
Packing **52 pcs / big parcel**  
Colour **Blue**

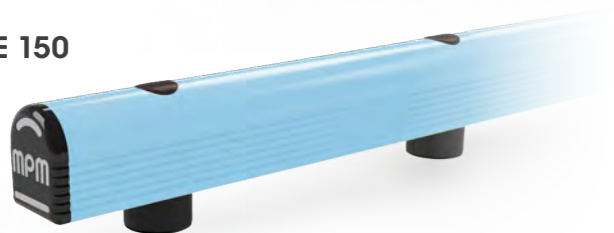


# GR ICE

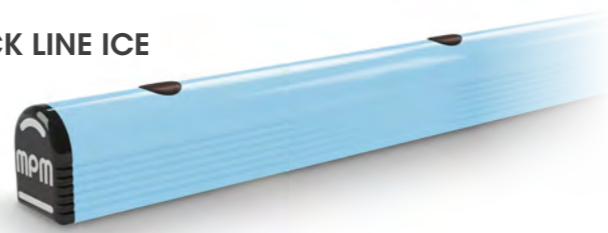


FÜR TIEFKÄLBEREICHE  
LOW TEMPERATURES

GR ICE 150



TRUCK LINE ICE

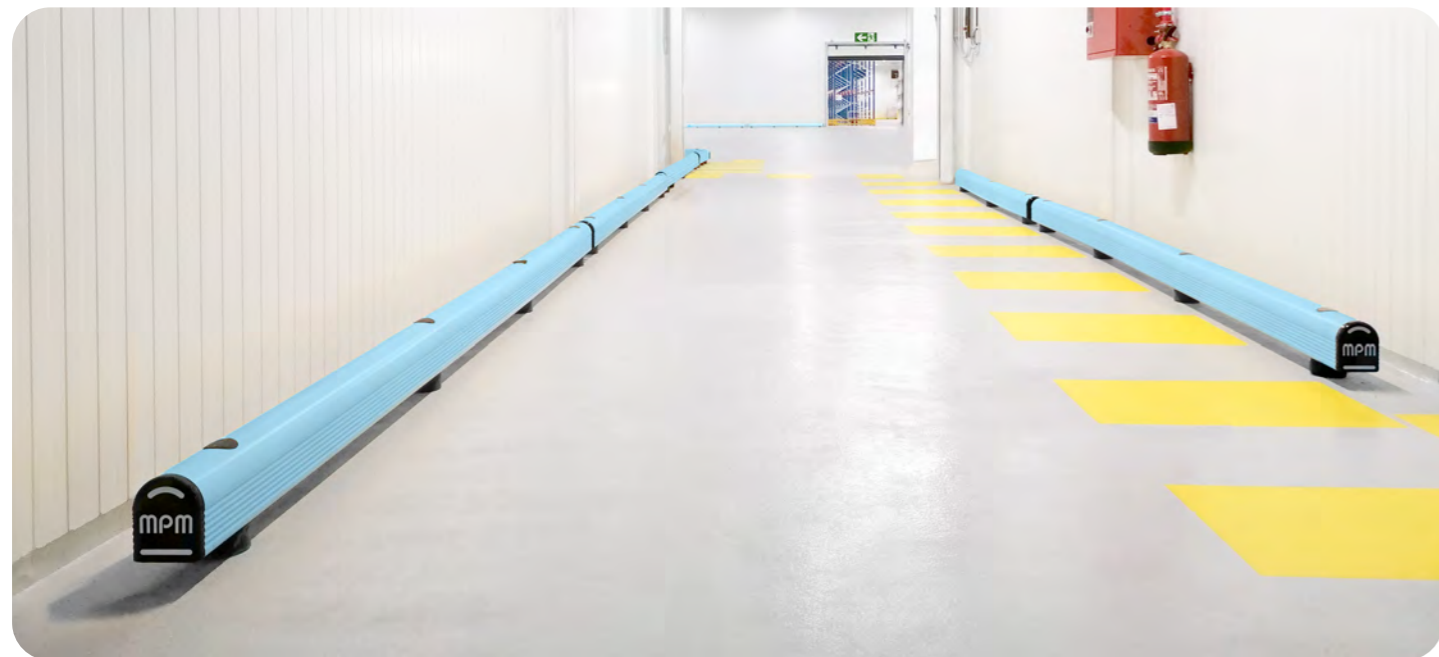


 Heavy Load

Height 200 mm  
Length 500, 750, 1000, 1250, 1500, 1750,  
2000, 2250, 2500, 3000, 4000 mm  
Fixing Included  
Colour ●

 Heavy Load

Height 150 mm  
Standard Module 500, 750, 1000, 1250, 1500, 1750,  
2000, 2250, 2500, 3000, 4000 mm  
Fixing Included  
Colour ●

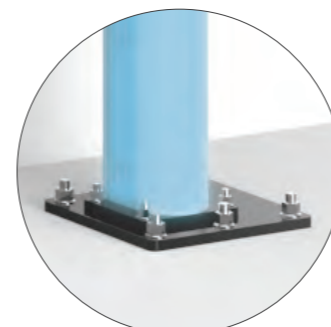


# FULL FRAME ICE



FÜR TIEFKÄLBEREICHE  
GEEIGNET  
RESISTANT TO  
LOW TEMPERATURES

INNOVATIVE  
BIGGER PLATES!



FOR SELF  
STANDING



FULL FRAME ICE  
SELF STANDING



 Heavy Load

Height UP to 5000 mm  
Width UP to 4500 mm  
Fixing Included  
Colour ●





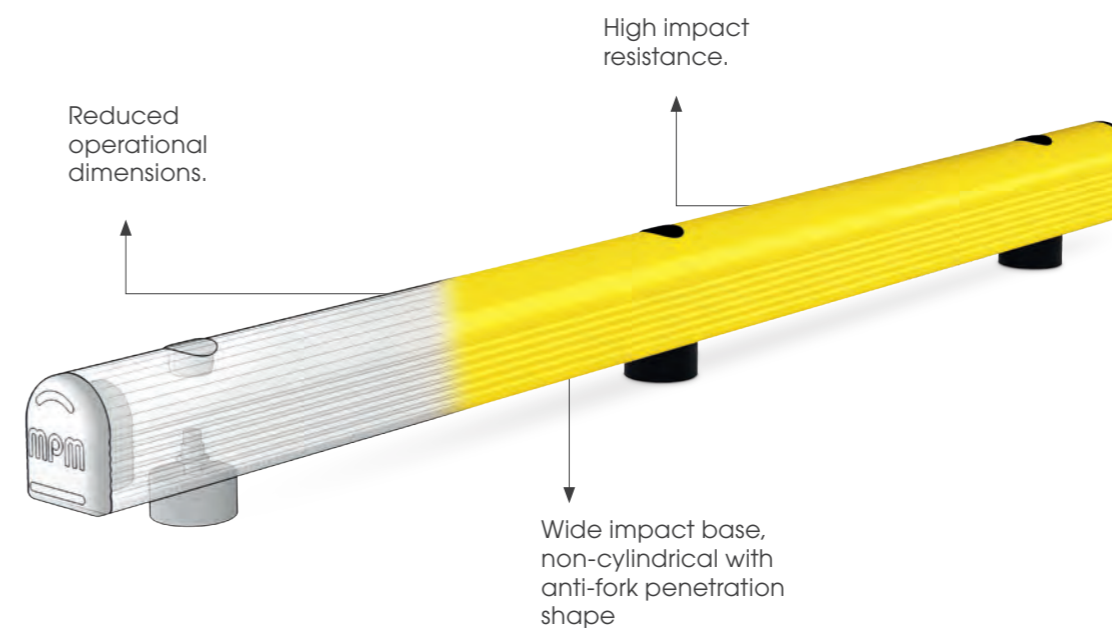
# 04 | GROUND LEVEL PROTECTIONS

Bumper systems designed to prevent damages to structures and to protect from low forks of forklifts.

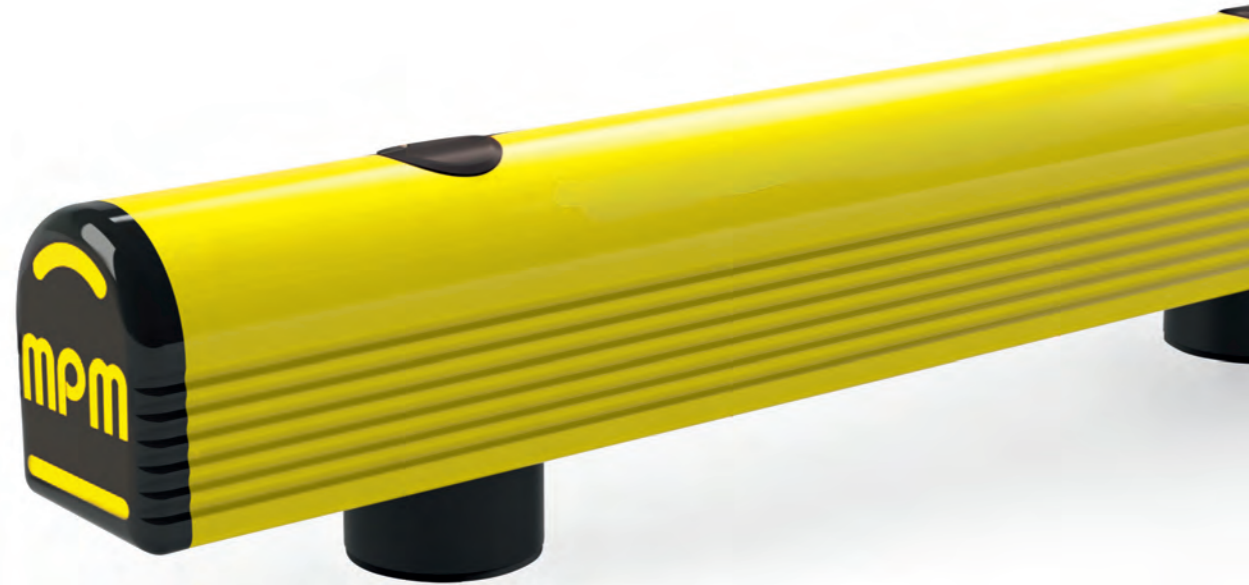
Sistemi antiurto pensati per prevenire i danni alle strutture e per proteggere dalle forche basse dei carrelli elevatori.

Systèmes de pare-chocs conçus pour prévenir les dommages aux structures et protéger contre les fourches basses des chariots élévateurs.

Sistemas de parachoques diseñados para prevenir daños en las estructuras y proteger contra las horquillas bajas de los carretillas elevadoras.



# GR



GR 90



GR 150



**Light Load**

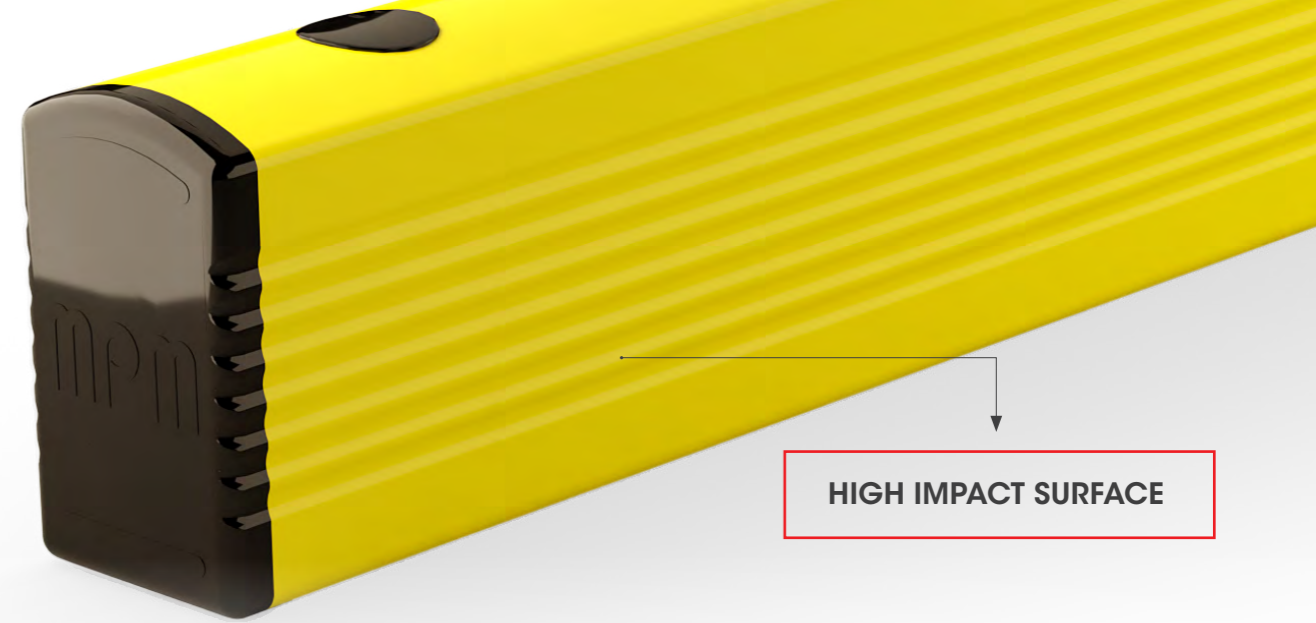
Height **140 mm**  
 Length **500, 750, 1000, 1500, 2000, 3000, 4000 mm**  
 Fixing **Included**  
 Colour **● ●**

**Heavy Load**

Height **200 mm**  
 Length **500, 750, 1000, 1250, 1500, 1750, 2000, 2250, 2500, 3000, 4000 mm**  
 Fixing **Included**  
 Colour **● ●**



# GUARDIAN



**HIGH IMPACT SURFACE**

TRUCK LINE



**Heavy Load**

Height **150 mm**  
 Length **500, 750, 1000, 1250, 1500, 1750, 2000, 2250, 2500, 3000, 4000 mm**  
 Fixing **Included**  
 Colour **● ●**

GUARDIAN 200 **NEW**



**Heavy Load**

Height **200 mm**  
 Standard Module **500, 750, 1000, 1250, 1500, 1750, 2000, 2250, 2500, 3000, 4000 mm**  
 Fixing **Included**  
 Colour **● ●**

GUARDIAN 300 **NEW**



**Heavy Load**

Height **300 mm**  
 Standard Module **500, 750, 1000, 1250, 1500, 1750, 2000, 2250, 2500, 3000 mm**  
 Fixing **Included**  
 Colour **● ●**



# GRIN



**GRIN 90**



**GRIN 150**



**Light Load**

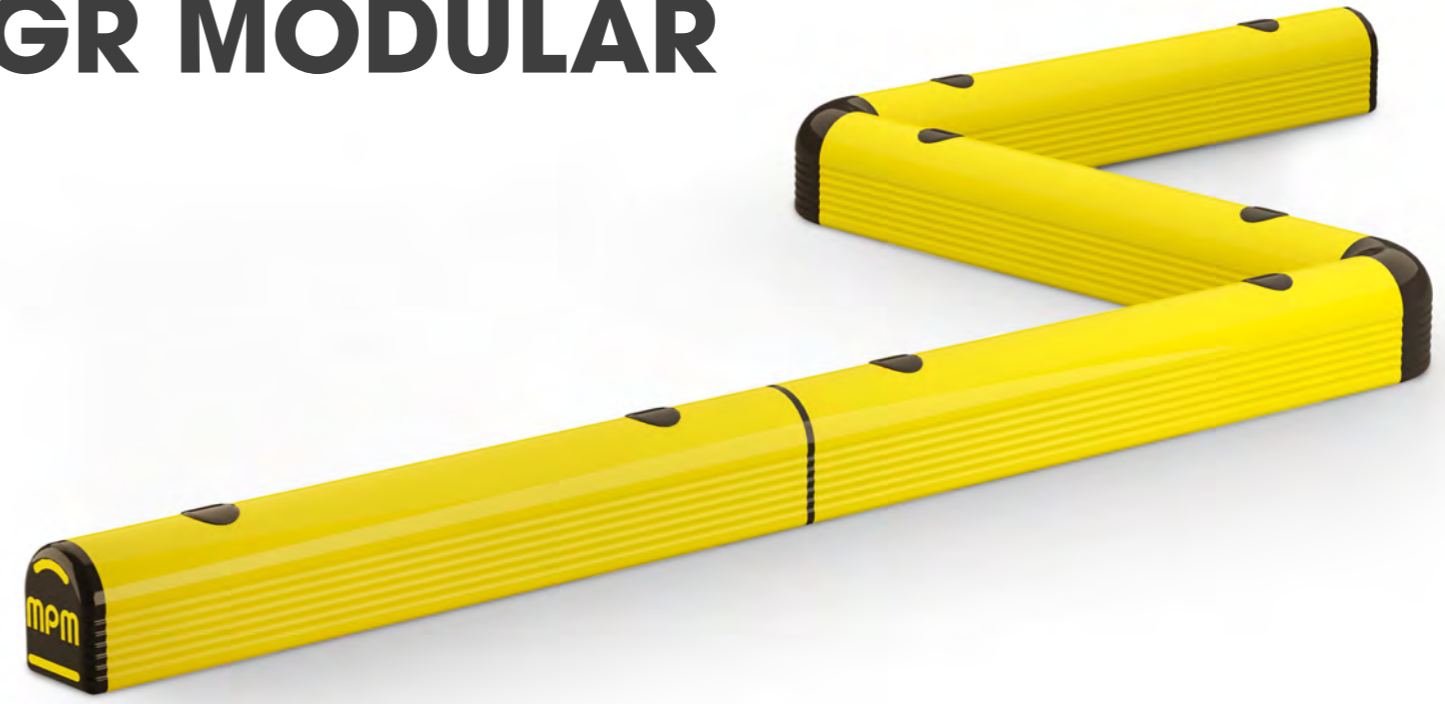
Height **140 mm**  
 Standard Module **600 - 1500 mm (50 Increments)**  
 Fixing **Included**  
 Colour **● ●**

**Heavy Load**

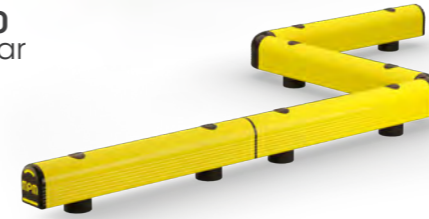
Height **200 mm**  
 Standard Module **800 - 2000 mm (50 Increments)**  
 Fixing **Included**  
 Colour **● ●**



# GR MODULAR



**GR 150 Modular**



**TRUCK LINE Modular**



**Heavy Load**

Height **200 mm**  
 Standard Module **500, 750, 1000, 1250, 1500, 1750, 2000, 2250, 2500, 3000, 4000 mm**  
 Fixing **Included**  
 Colour **● ●**

**Heavy Load**

Height **150 mm**  
 Standard Module **500, 750, 1000, 1250, 1500, 1750, 2000, 2250, 2500, 3000, 4000 mm**  
 Fixing **Included**  
 Colour **● ●**



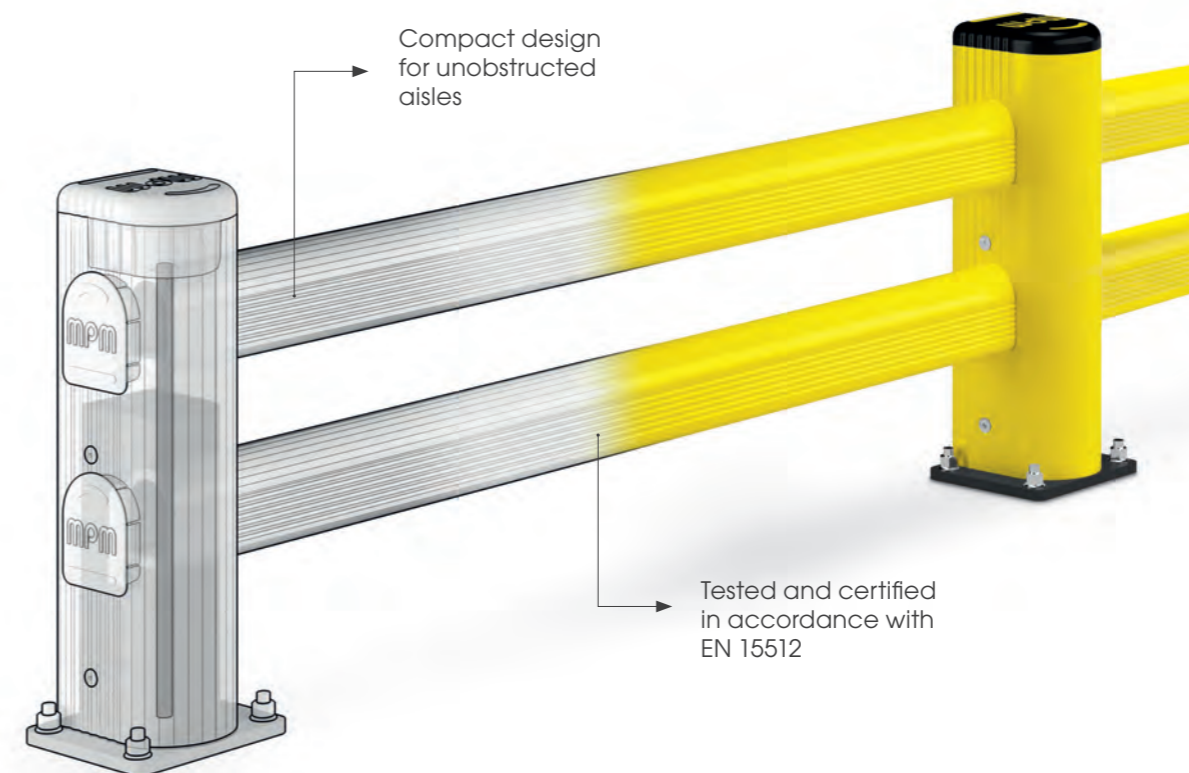


Traffic barriers are a solution designed for the protection of people, infrastructures, machinery, and for the demarcation of moving vehicles.

Le barriere antiurto sono una soluzione studiata per la protezione di persone, infrastrutture, macchinari e per la delimitazione di veicoli in movimento.

Les barrières de circulation sont une solution conçue pour la protection des personnes, des infrastructures, des machines et pour la délimitation des véhicules en mouvement.

Las barreras antigolpes para vehículos son una solución diseñada para la protección de personas, infraestructuras, maquinaria y para la delimitación de vehículos en movimiento.



# LM MODULAR



SM Modular



Light Load

Height **350 mm**  
 Standard Module **250 - 1500 mm (250 increments)**  
 Fixing **Included**  
 Colour ● ●

LM Modular



Heavy Load

Height **420, 710 mm**  
 Standard Module **250 - 2000 mm (250 increments)**  
 Fixing **Included**  
 Corner **Available (only 800)**  
 Colour ● ●

LINK SINGLE Modular



Heavy Load

Height **500, 800 mm**  
 Standard Module **500 - 2000 mm (250 increments)**  
 Fixing **Included**  
 Corner **External Available**  
 Colour ● ●

LM/1 LINK Modular



Heavy Load

Height **420 mm**  
 Standard Module **500 - 2000 mm (250 increments)**  
 Fixing **Included**  
 Corner **External Available**  
 Colour ● ●

LINK LM Modular



Heavy Load

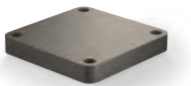
Height **500, 800 mm**  
 Standard Module **500 - 2000 mm (250 increments)**  
 Fixing **Included**  
 Corner **External Available**  
 Colour ● ●



# BFLEX MODULAR



SHOCK ABSORBER PAD



INCLUDED

BFLEX.FRONT/1 Modular



Heavy Load

Height **450 mm**  
 Standard Module **750 - 2000 mm (250 increments)**  
 Fixing **Included**  
 Colour ●

BFLEX.COM/1 Modular



Heavy Load

Height **450 mm**  
 Standard Module **750 - 2000 mm (250 increments)**  
 Fixing **Included**  
 Corner **Available**  
 Colour ●



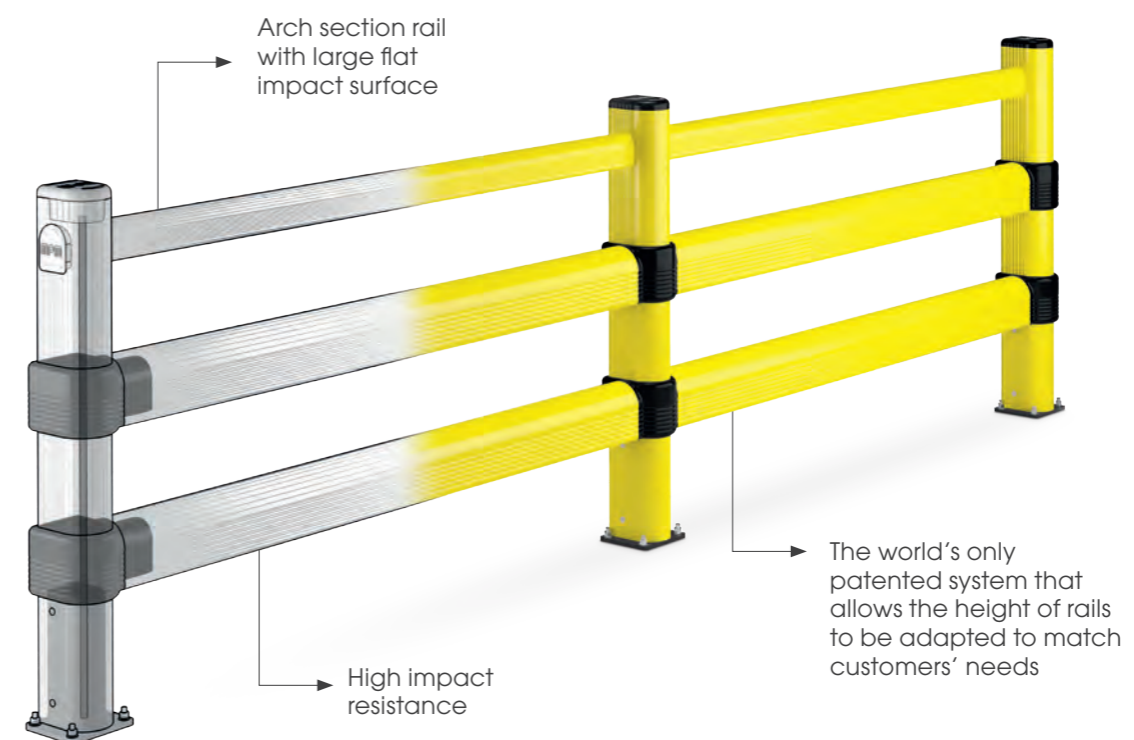


New system specific for the protection of pedestrians and resistant to forklift movements with different load types.

Sistema di profili antiurto specifico per la protezione delle aree pedonali dai carrelli in movimento con diverse portate di carico.

Système bumper, spécifique pour protéger les zones piétonnes contre les mouvements des chariots.

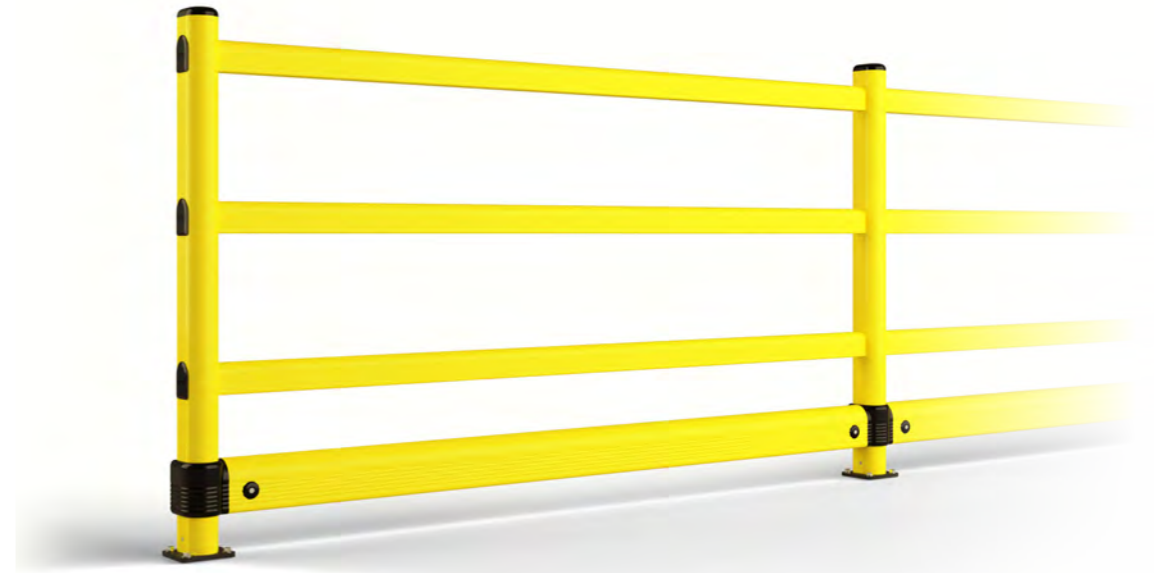
Sistema específico de perfiles antichoque para la protección de zonas peatonales de carros en movimiento con diferentes capacidades de carga.



# PEDESTRIAN 90



# LINK 120



HAND RAIL



PED 90



PED 90 GL REF







LINK 120/1







PED 90 LINK





 Light Load  
 Height **1100 mm**  
 Standard Module **250 - 1500 mm (250 Increments)**  
 Corner **Available**  
 Fixing **Included**  
 Colour 

 Light Load  
 Height **1100 mm**  
 Standard Module **250 - 1500 mm (250 Increments)**  
 Corner **Available**  
 Fixing **Included**  
 Colour 

 Heavy Load  
 Height **1100 mm**  
 Standard Module **750 - 2000 mm (250 Increments)**  
 Fixing **Included**  
 Colour 

 Heavy Load  
 Height **1100 mm**  
 Standard Module **500 - 2000 mm (250 Increments)**  
 Fixing **Included**  
 Colour 

 Heavy Load  
 Height **1100 mm**  
 Standard Module **500 - 2000 mm (250 Increments)**  
 Fixing **Included**  
 Colour 



# PEDESTRIAN 150



PED 150






PED 150 TL






PED 150 G



 Heavy Load  
 Height **1100 mm**  
 Standard Module **250 - 2000 mm (250 Increments)**  
 Corner **Available**  
 Fixing **Included**  
 Colour  

 Heavy Load  
 Height **1100 mm**  
 Standard Module **750 - 2000 mm (250 Increments)**  
 Corner **Available**  
 Fixing **Included**  
 Colour  

 Heavy Load  
 Height **1100 mm**  
 Standard Module **750 - 2000 mm (250 Increments)**  
 Corner **Available**  
 Fixing **Included**  
 Colour  



# LINK 150









LINK 150/1



LINK 150/2



 Heavy Load  
 Height **1100 mm**  
 Standard Module **500 - 2000 mm (250 Increments)**  
 Corner **External Available**  
 Fixing **Included**  
 Colour  

 Heavy Load  
 Height **1100 mm**  
 Standard Module **500 - 2000 mm (250 Increments)**  
 Corner **External Available**  
 Fixing **Included**  
 Colour  



# PEDESTRIAN 150 LINK




PED 150 LINK



CHOOSE THE HEIGHT YOU NEED!



-  Heavy Load
- Height 1100, 1500, 2000, 2500, 3000 mm
- Standard Module 500 - 2000 mm (250 Increments)
- Corner External Available
- Fixing Included
- Colour



# PIN



**PED 150 PIN**



**PED 200 PIN**



Heavy Load

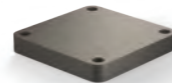
Height **1100 mm**  
 Standard Module **500 - 2500 mm (250 Increments)**  
 Fixing **Included**  
 Corner **External available**  
 Colour **● ●**



Heavy Load

Height **1100 mm**  
 Standard Module **500 - 2000 mm (250 Increments)**  
 Fixing **Included**  
 Colour **●**

**SHOCK ABSORBER PAD**



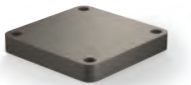
**INCLUDED**



# BFLEX MODULAR



**SHOCK ABSORBER PAD**



**INCLUDED**

**BFLEX.FRONT/2 Modular**



**BFLEX.COM/2 Modular**



Heavy Load

Height **1100 mm**  
 Standard Module **750 - 2000 mm (250 increments)**  
 Fixing **Included**  
 Colour **●**



Heavy Load

Height **1100 mm**  
 Standard Module **750 - 2000 mm (250 increments)**  
 Corner **Available**  
 Fixing **Included**  
 Colour **●**



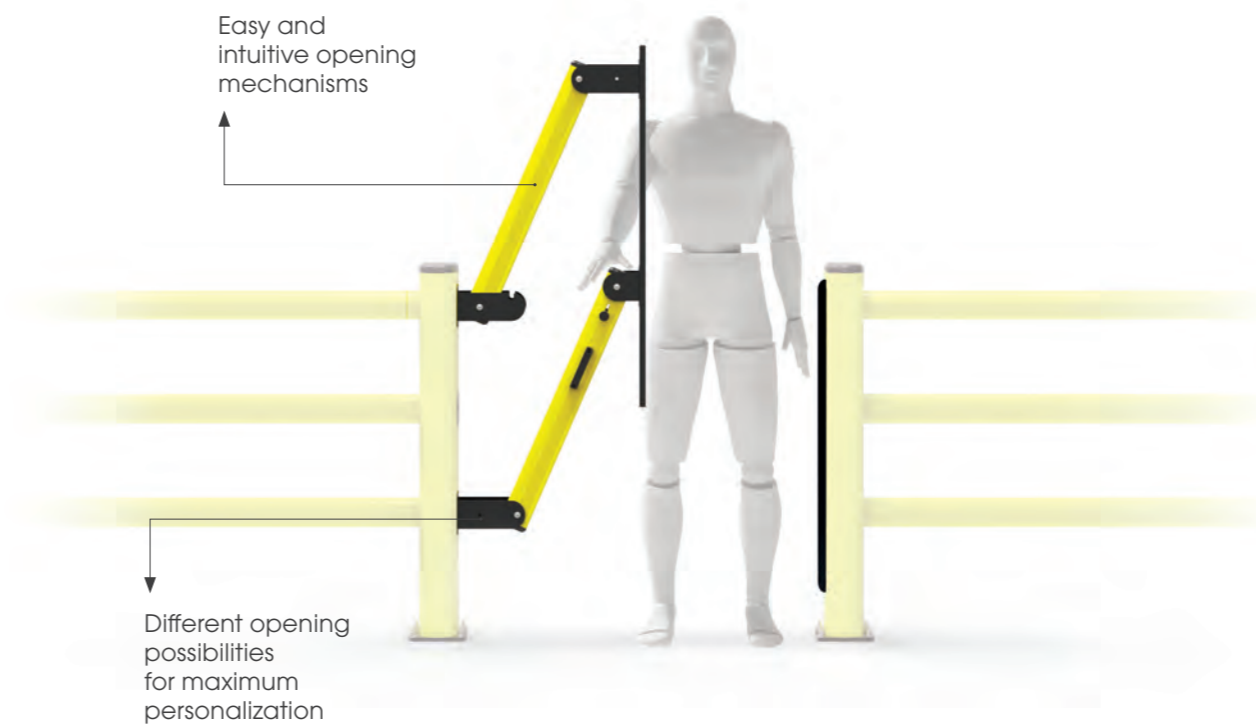


Safety Gate systems with different opening possibilities. Developed to complete our barriers for protection of pedestrian areas.

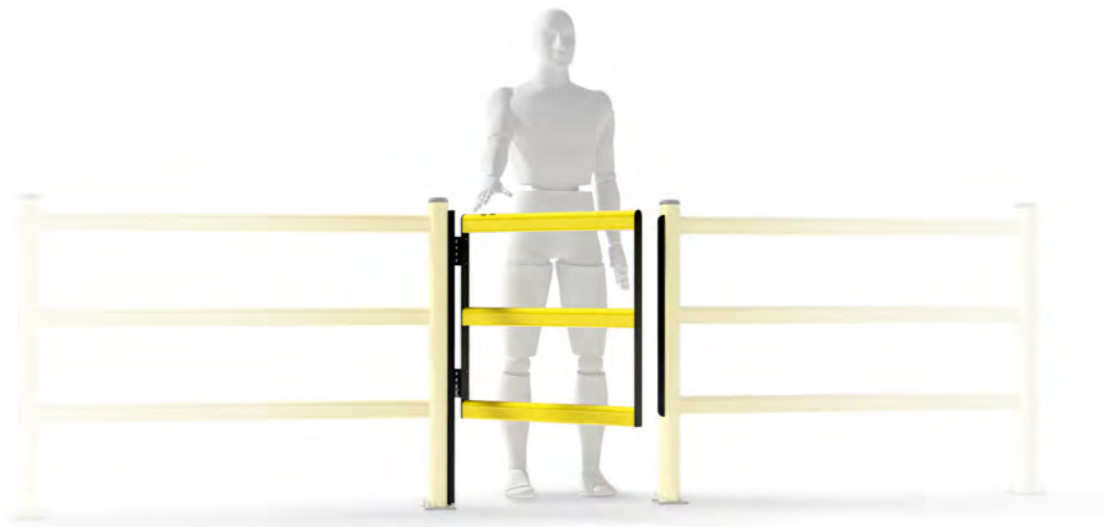
Sistema di cancelli di sicurezza progettato per completare le nostre barriere di protezione per aree pedonali.

Système de portillons étudié pour l'installation de nos barrières de protections pour les zones piétons.

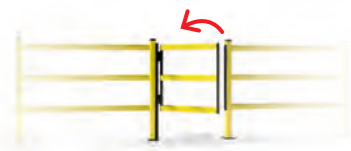
Sistema de puertas diseñado para completar nuestras barreras peatonales.



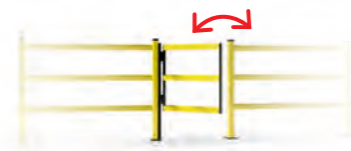
# DOOR PEDESTRIAN 90



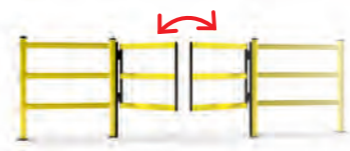
DP 90 ONE WAY



DP 90 SWING



DP 90 SWING DOUBLE



Width **Min 400 mm - Max 1000 mm (50 increments)**  
 Fixing **Included**  
 Colour **● ●**

Width **Min 400 mm - Max 1000 mm (50 increments)**  
 Fixing **Included**  
 Colour **● ●**

Width **Min 800 mm - Max 2000 mm (50 increments)**  
 Fixing **Included**  
 Colour **● ●**



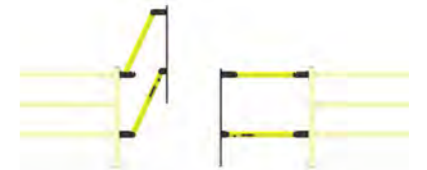
# LIFT GATE 90



LIFT GATE 90



LIFT GATE 90 DOUBLE



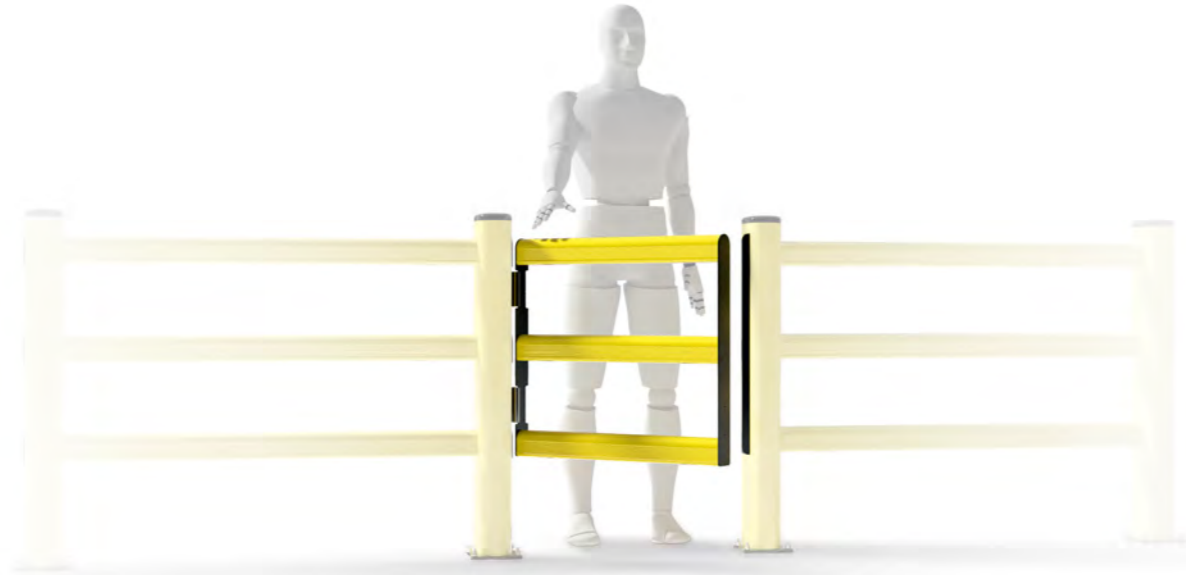
Width **Min 1050 mm - Max 1600 mm (50 increments)**  
 Fixing **Included**  
 Colour **● ●**

Width **Min 2100 mm - Max 3200 mm (50 increments)**  
 Fixing **Included**  
 Colour **● ●**

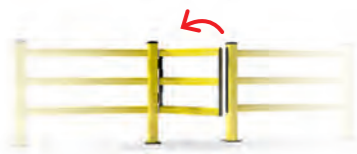


# DOOR PEDESTRIAN 150

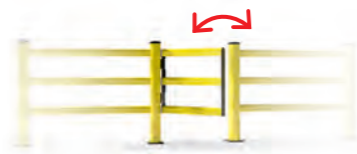
Discover our new tech **SAFE WAY** on page 98



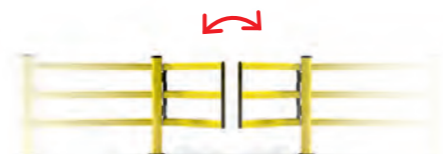
DP 150 ONE WAY



DP 150 SWING



DP 150 SWING DOUBLE



Width **Min 400 mm - Max 1000 mm (50 increments)**  
 Fixing **Included**  
 Colour **● ●**

Width **Min 400 mm - Max 1000 mm (50 increments)**  
 Fixing **Included**  
 Colour **● ●**

Width **Min 800 mm - Max 2000 mm (50 increments)**  
 Fixing **Included**  
 Colour **● ●**



# LIFT GATE 150



LIFT GATE 150



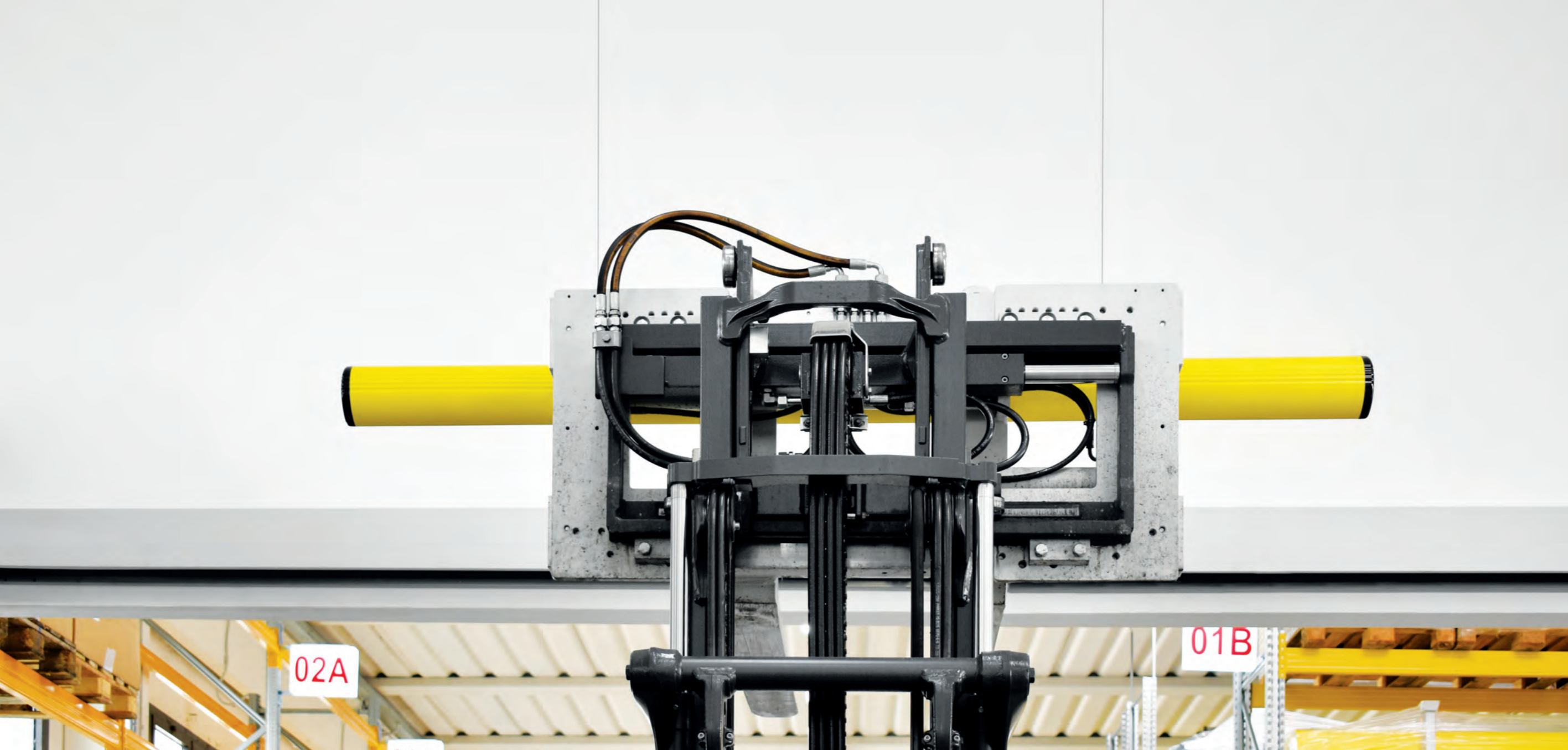
LIFT GATE 150 DOUBLE



Width **Min 1100 mm - Max 2000 mm (50 increments)**  
 Fixing **Included**  
 Colour **● ●**

Width **Min 2200 mm - Max 4000 mm (50 increments)**  
 Fixing **Included**  
 Colour **● ●**



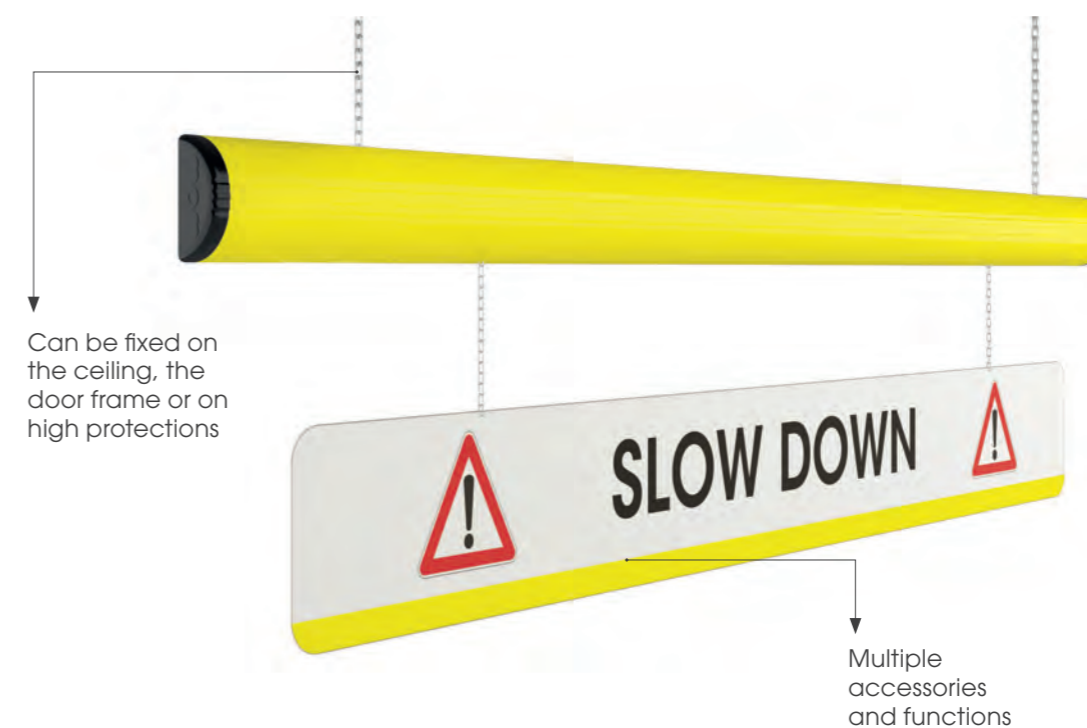


Protection system designed to prevent collisions with overhead infrastructure, gates and doors jambs. It is created to keep under control the passage of forklifts that exceed height limits.

Sistema di protezione ideato per prevenire le collisioni dei carrelli elevatori in movimento con le infrastrutture sopraelevate, gli stipiti di porte e portoni. Limita il passaggio di carrelli che superano i limiti di altezza.

Systèmes de protection conçus pour prévenir les collisions des chariots élévateurs en mouvement avec les infrastructures en hauteur et les montants des portes. Utiles pour empêcher le passage des chariots élévateurs qui dépassent les limites de hauteur.

Sistema de protección diseñado para evitar la colisión de carretillas elevadoras en movimiento con infraestructuras, instalaciones elevadas y marcos de puertas industriales. Diseñada para limitar el paso de las carretillas que superan los límites de altura.



# WARNING BAR

UP TO 70.000 IMPACTS!



## WARNING BAR



Heavy Load  
Length 2000, 3000 mm  
Colour ●

## WARNING BAR INFORMATION SIGN



Heavy Load  
Length 2000, 3000 mm  
Colour ●

## WARNING BAR LIGHT & SOUND

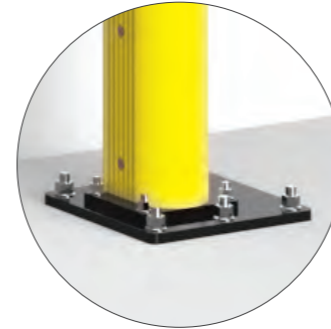


Heavy Load  
Length 2000, 3000 mm  
Colour ●



# FULL FRAME

INNOVATIVE BIGGER PLATES!



FOR SELF STANDING



## FULL FRAME SELF STANDING



Heavy Load  
Height UP to 5000 mm  
Width UP to 4500 mm  
Fixing Included  
Colour ●

## FULL FRAME WALL FIXING



Heavy Load  
Height To be defined  
Width To be defined  
Fixing Included  
Colour ●





# LOADING BAY PROTECTIONS

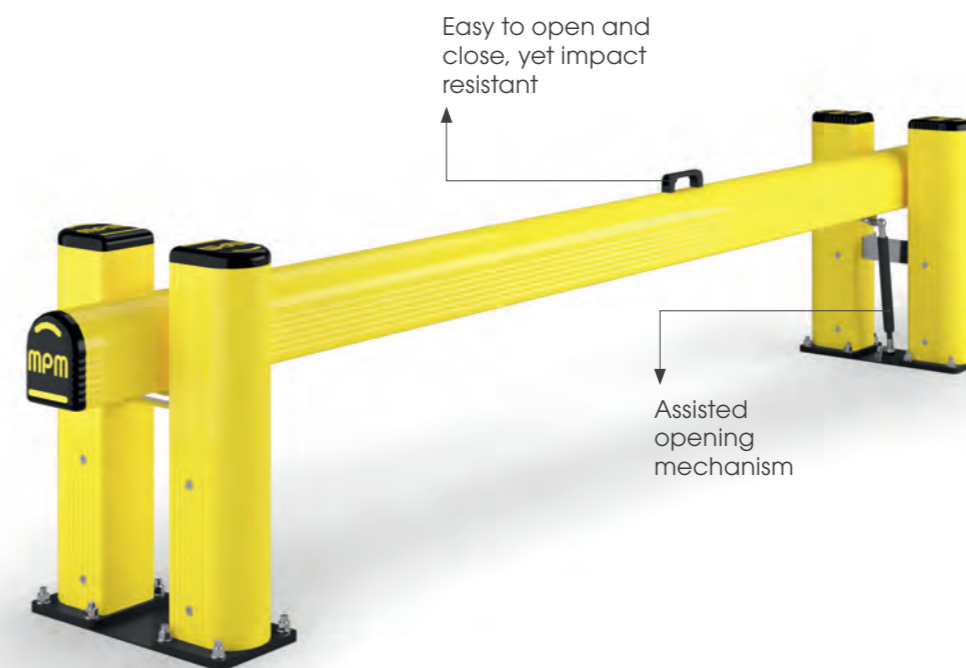
# 09

Impact protections designed for loading bays. They ensure safety for incoming vehicles and prevent damages.

Protezioni anti-urto progettate per le baie di carico. Garantiscono la sicurezza dei veicoli in arrivo e prevengono danni.

Protections contre les chocs conçues pour les quais de chargement. Elles garantissent la sécurité des véhicules entrants et préviennent les dommages.

Protecciones contra impactos diseñadas para muelles de carga. Aseguran la seguridad de los vehículos entrantes y previenen los daños.



# DOCK GATE



HUG GATE



DOCK GATE



**Light Load**  
 Height **1100 mm**  
 Width **600 - 3000 mm (50 Increments)**  
 Fixing **Included**  
 Colour **●**

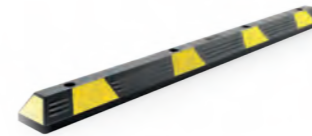
**Heavy Load**  
 Height **530 mm**  
 Width **L: 2400 - 2600 mm (50 Increments)**  
**XL: 2650 - 2800 mm (50 Increments)**  
**XXL: 2850 - 3000 mm (50 Increments)**  
 Fixing **Included**  
 Colour **● ●**



# WHEEL STOP



CAR STOP



TRUCK STOP



Height **90 mm**  
 Width **1810 mm**  
 Fixing **On Request**

Height **150 mm**  
 Width **1000 mm**  
 Fixing **On Request**



# DOCK BUMPER



## DOCK BUMPER S



**NEW**

## DOCK BUMPER



Height **400 mm**  
 Width **110 mm**  
 Fixing **On Request**  
 Colour **●**

Height **500 mm**  
 Width **300 mm**  
 Fixing **On Request**  
 Colour **●**



# TRUCK LINE



## TRUCK LINE



 **Heavy Load**

Height **150 mm**  
 Length **500, 750, 1000, 1250, 1500, 1750, 2000, 2250, 2500, 3000, 4000 mm**  
 Fixing **Included**  
 Colour **● ●**





# COLUMN PROTECTIONS

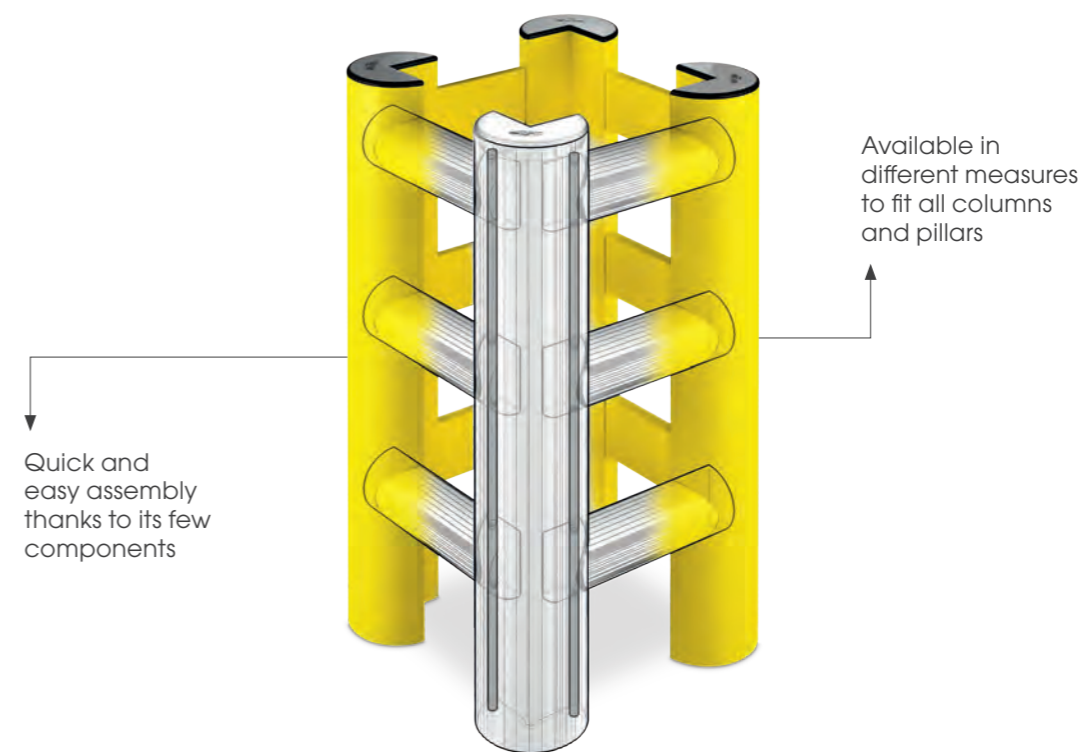
# 10

Bumper system specific for columns protection, strongly resistant to impacts from moving vehicles of different loads.

Sistema di profili specifico per la protezione delle colonne dai carrelli in movimento di varie portate.

Nouveau système bumper, spécifique pour protéger les poteaux contre les mouvements des chariots.

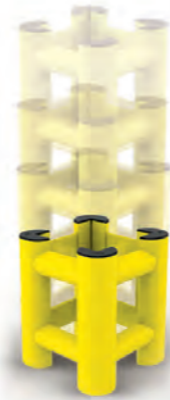
Sistema de perfiles específico para la protección de las columnas de los carros en movimiento de diferentes capacidades.



# HUG TOWER

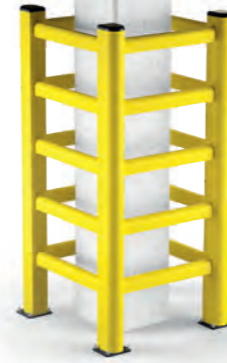


CHOOSE THE HEIGHT YOU NEED!



# TOWER PROTECTION

AVAILABLE ALSO:



MINI HUG TOWER



HUG TOWER



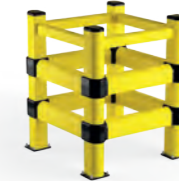
TOWER PROTECTION



TOWER LINK 150/1



TOWER LINK 150/2



TOWER LINK 150/3



Heavy Load

Height **1100 mm**  
Fixing **Included**  
Colour **●**



Heavy Load

Height **730, 1090, 1450, 1810 mm**  
2/3 Sides **Available (1090 mm only)**  
Fixing **Included**  
Colour **●**

Heavy Load

Height **710, 1100, 1900 mm**  
2/3 Sides **Available**  
Fixing **Included**  
Colour **● ●**

Heavy Load

Height **1100 mm**  
2/3 Sides **Available**  
Fixing **Included**  
Colour **● ●**

Heavy Load

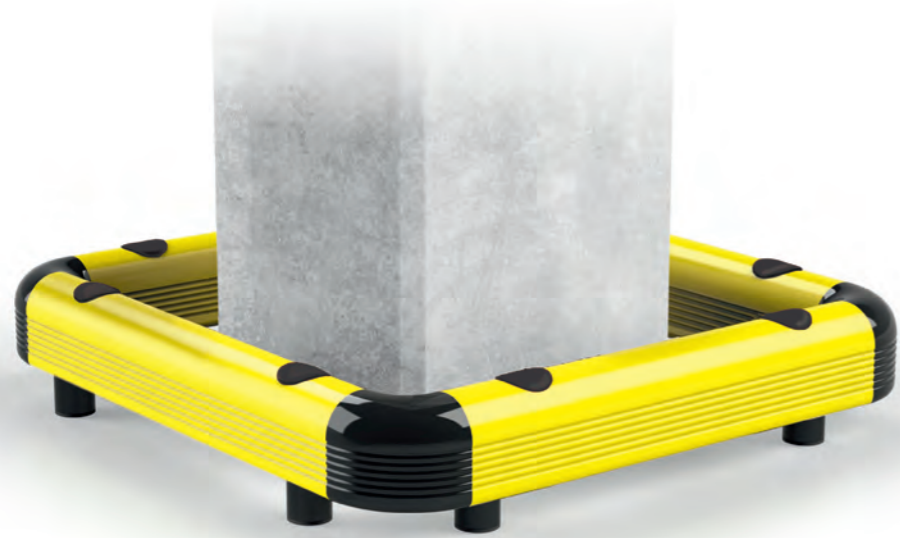
Height **1100 mm**  
2/3 Sides **Available**  
Fixing **Included**  
Colour **● ●**

Heavy Load

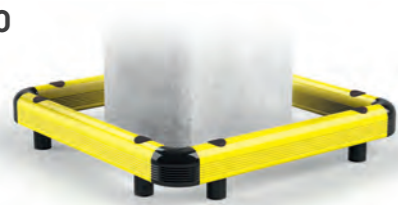
Height **1150 mm**  
1/2/3 Sides **Available**  
Fixing **Included**  
Colour **● ●**



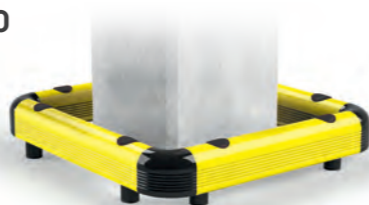
# COPRO



COPRO 90



COPRO 150



Light Load

Height **140 mm**  
 2/3 Sides **Available**  
 Fixing **Included**  
 Colour **● ●**

Heavy Load

Height **200 mm**  
 2/3 Sides **Available**  
 Fixing **Included**  
 Colour **● ●**



# SOFT HUG

COMPACT & SOFT

HOOK AND LOOP CLOSURE

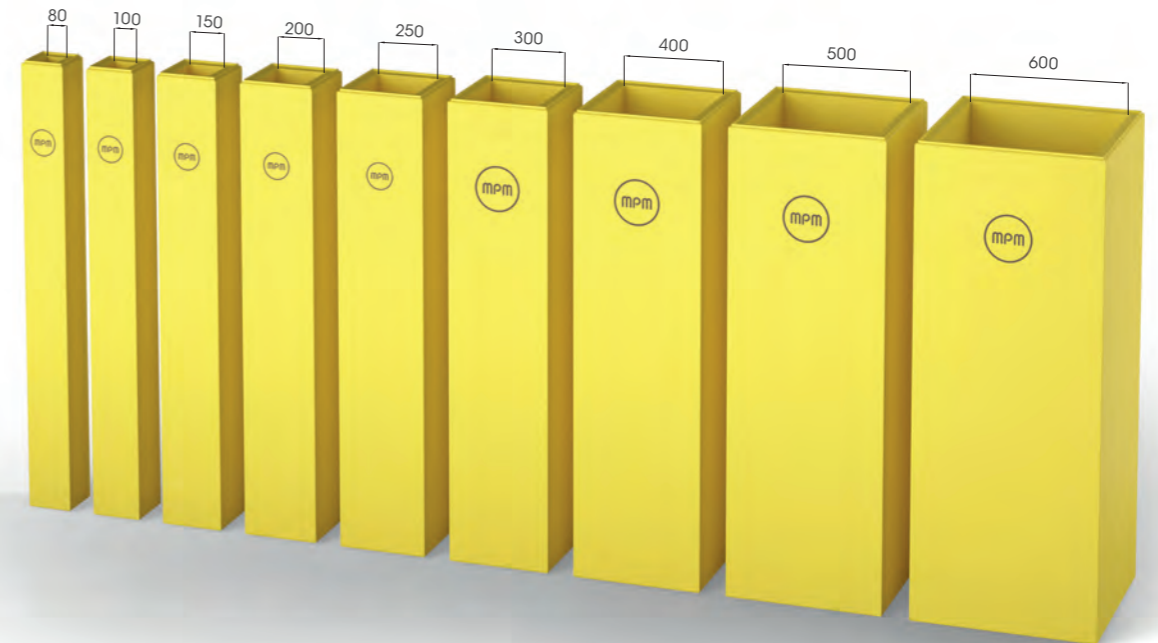
SOFT HUG



Height **1800 mm**  
 Width **80, 100, 150, 200, 250, 300, 400, 500, 600 mm**  
 Colour **●**



## CHOOSE THE SIZE YOU NEED!



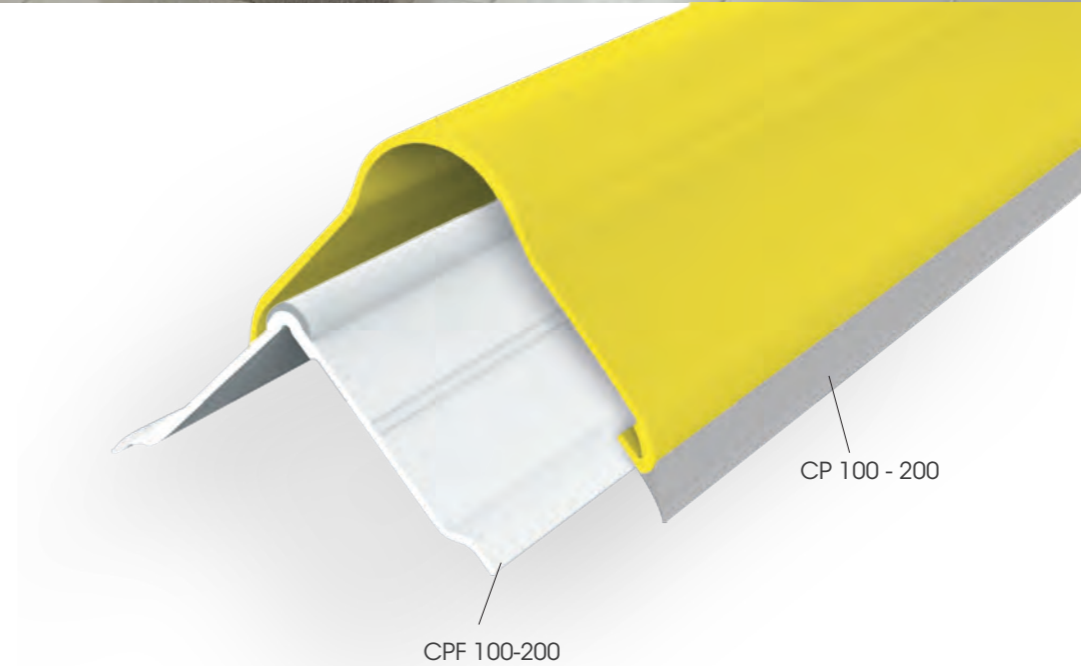


Designed to protect pillars and columns or external corners of walls and panels.

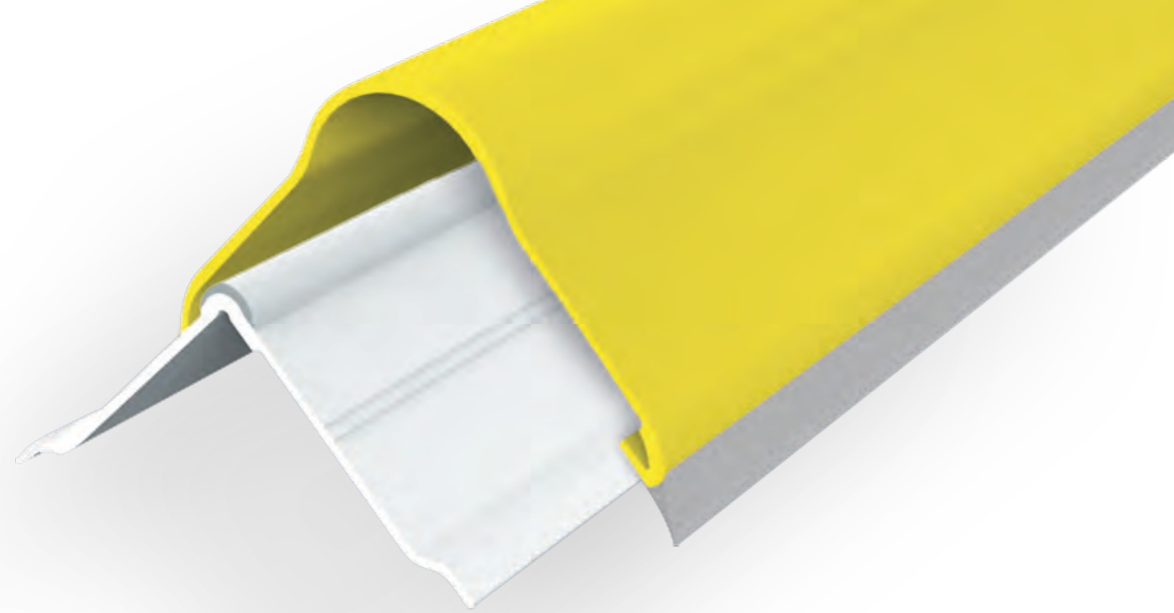
Realizzato per proteggere pilastri e colonne o angoli esterni di muri e pannelli.

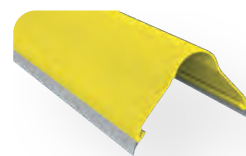
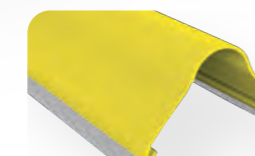
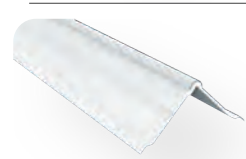

Étudié pour protéger les poteaux et les colonnes ou les angles extérieurs de murs et de panneaux.

Realizado para proteger pilares y columnas o esquinas exteriores de paredes y paneles.



# CP



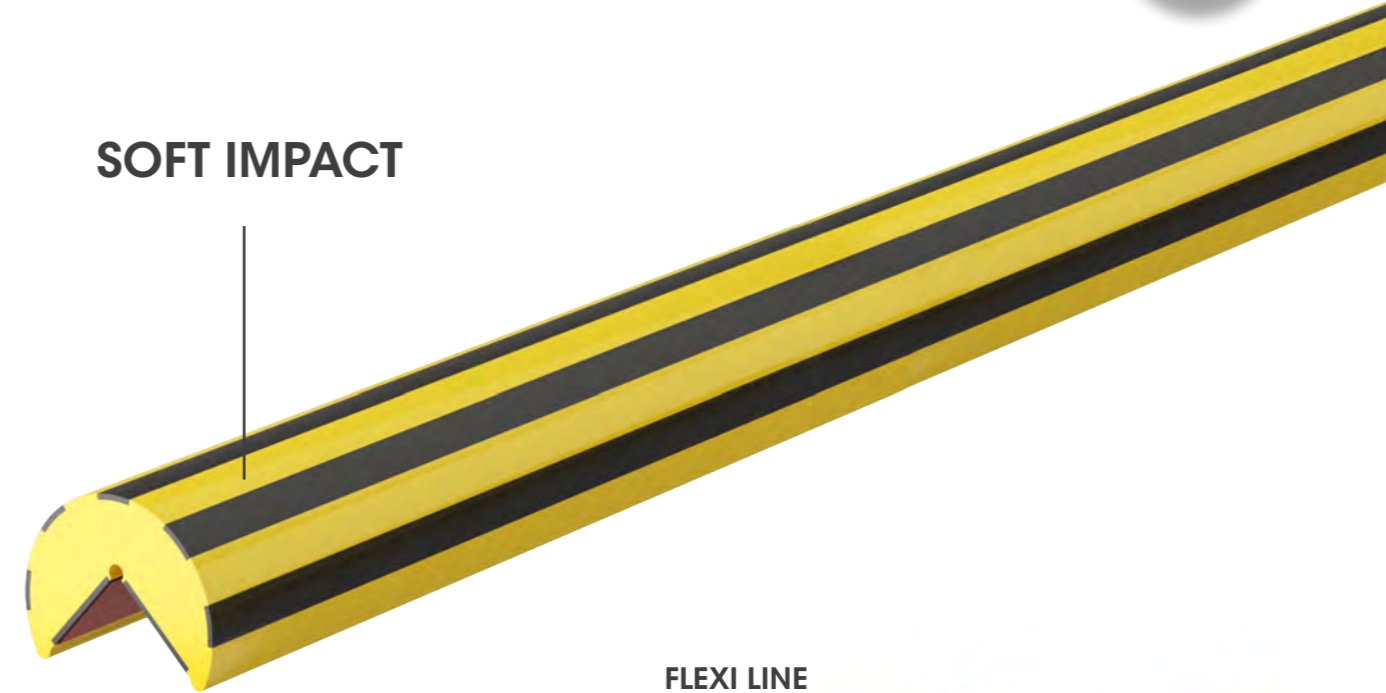
 <p>CP 100</p>	<p>Length 4.000 mm Packing 10 pcs / box Colour M B E F</p> <p>Length 2.000 mm Packing 10 pcs / bag Colour M</p>	 <p>CP 200</p>	<p>Length 4.000 mm Packing 2 pcs / bag Colour M B E</p> <p>Length 2.000 mm Packing 2 pcs / bag Colour M</p>
 <p>CPF 100</p>	<p>Length 4.000 mm Packing 10 pcs / box</p> <p>Length 2.000 mm Packing 10 pcs / bag</p>	 <p>CPF 200</p>	<p>Length 2.000, 4.000 mm Packing 2 pcs / bag</p>
 <p>CPT 100</p>	<p>Packing 40 pcs / box Colour B E F</p>	 <p>CPT 200</p>	<p>Packing 20 pcs / box Colour B E</p>



# FLEXI LINE

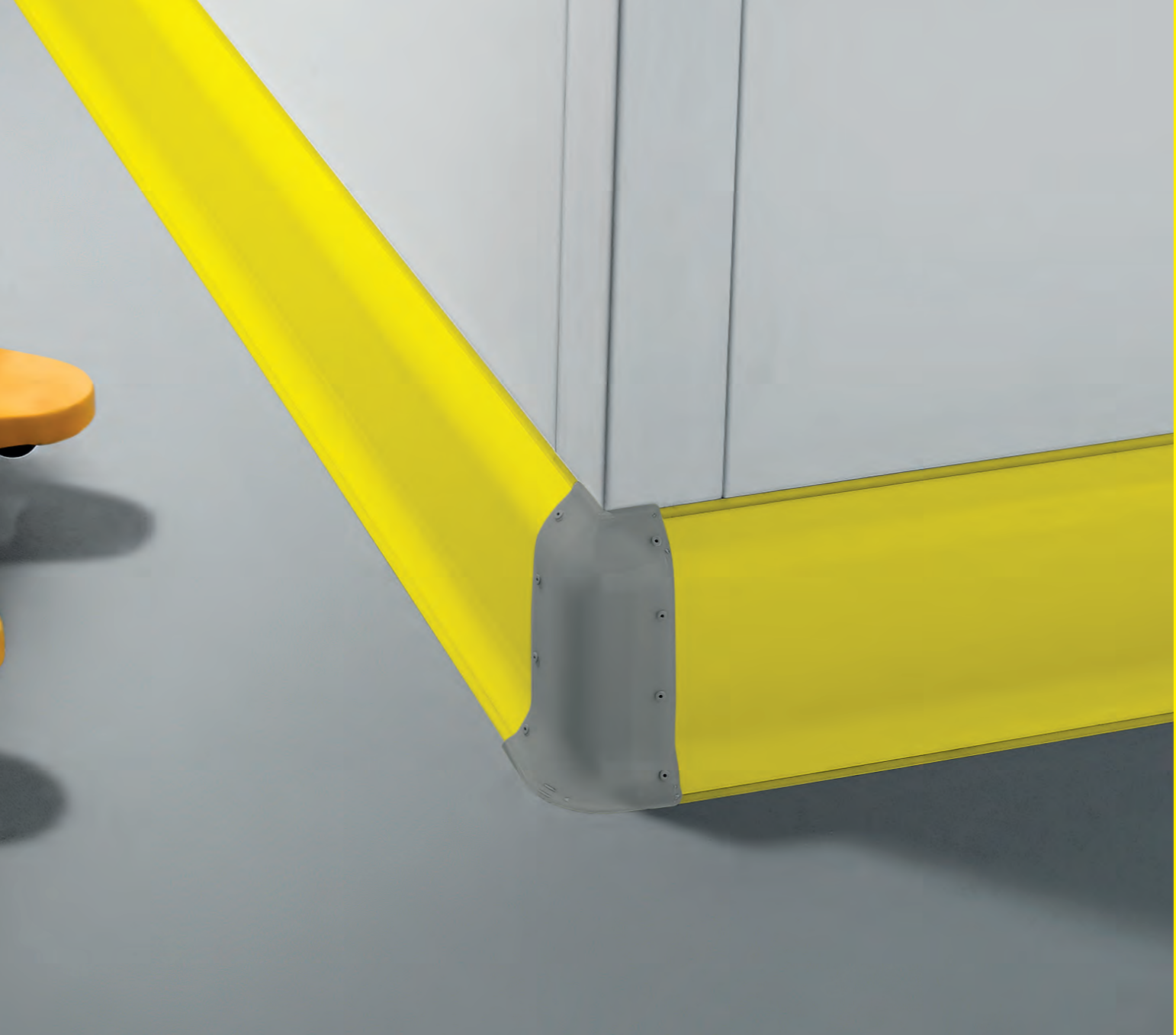
DOUBLE-SIDED TAPE FIXING

SOFT IMPACT



FLEXI LINE



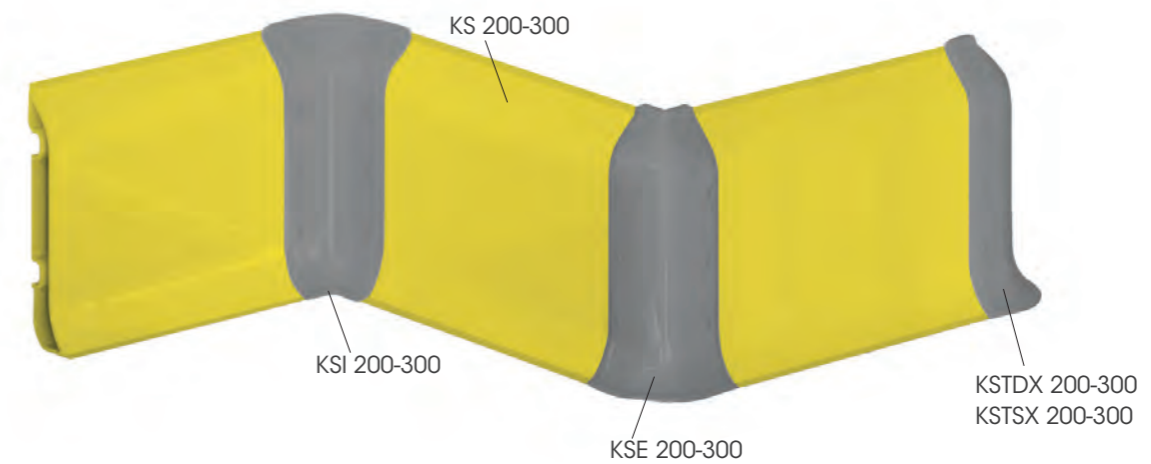


Innovative protections systems for walls and panels.  
Easy to install and clean. Fully equipped with corner caps and buttons.

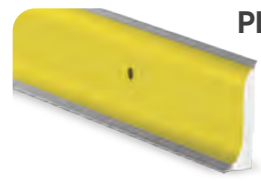
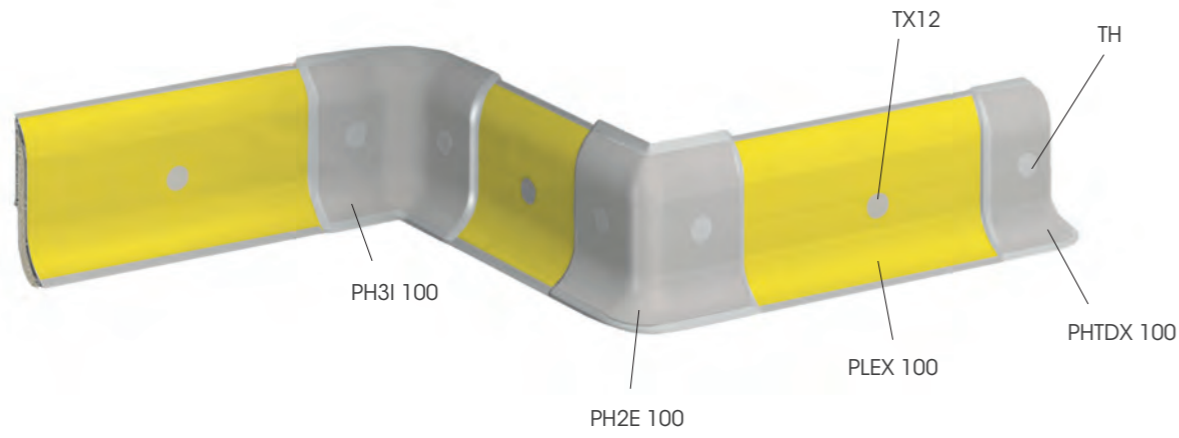
Sistemi innovativi di protezione per pareti e pannelli.  
Facile da installare e pulire. Completo di angolari e tappi.

Systèmes de protection innovants pour les murs et les panneaux.  
Facile à installer et à nettoyer. Complété de bouchons d'angles et d'embouts.

Sistemas de protección innovadores para paredes y paneles.  
Fácil de instalar y limpiar. Completo de esquinas y tapas.



# PLEX



**PLEX 100**

Height **100 mm**  
 Length **4.000 mm**  
 Packing **8 pcs / box**  
 To be complete with TX12  
 (100 pcs bag)  
 Colour **M K**



**PH2E 100**

Height **100 mm**  
 Packing **50 pcs / box**  
 To be complete with TH  
 Colour **K**



**PH2I 100**

Height **100 mm**  
 Packing **50 pcs / box**  
 To be complete with TH  
 Colour **K**



**PH3I 100**

Height **100 mm**  
 Packing **50 pcs / box**  
 To be complete with TH  
 Colour **K**



**PHJ 100**

Height **100 mm**  
 Packing **100 pcs / box**  
 To be complete with TH  
 Colour **F K**

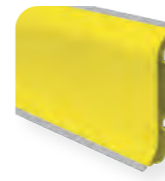
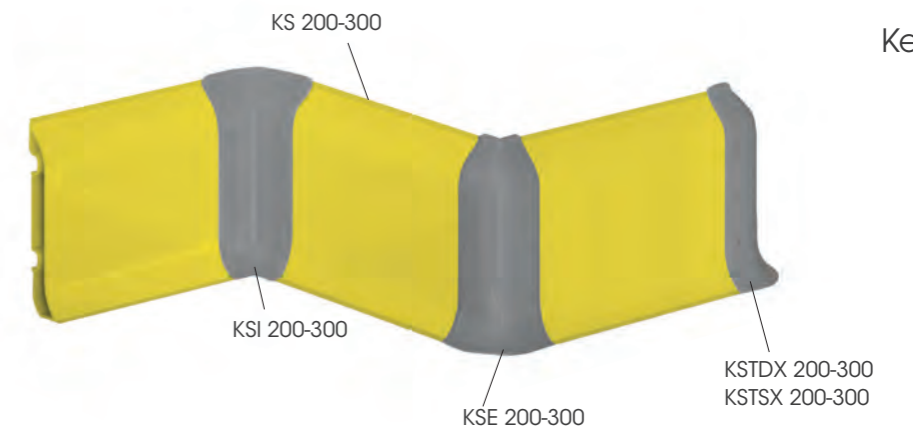


**PHTDX/SX 100**

Height **100 mm**  
 Packing **100 pcs / box**  
 To be complete with TH  
 Colour **K**

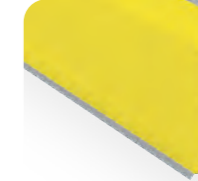


# KERB



**KS 200**

Height **200 mm**  
 Length **4.000 mm**  
 Depth **54 mm**  
 Packing **3 pcs / box**  
 Colour **M B E**



**KS 300**

Height **300 mm**  
 Length **4.000 mm**  
 Depth **77 mm**  
 Packing **1 pcs**  
 Colour **M E**

**KEPF 200/300**



Height **170 mm (200)**  
**255 mm (300)**  
 Packing **50 pcs / box (200)**  
**20 pcs / box (300)**  
 Colour **K**

**KSE 200/300**



Height **200 mm**  
**300 mm**  
 Packing **20 pcs / box (200)**  
**10 pcs / box (300)**  
 To be complete with TB14/TB20  
 Colour **B E**

**KSJ 200/300**



Height **200 mm**  
**300 mm**  
 Packing **20 pcs / box (200)**  
**10 pcs / box (300)**  
 To be complete with TB14/TB20  
 Colour **B E**

**KSTDX/SX 200/300**



Height **200 mm**  
**300 mm**  
 Packing **20 pcs / box (200)**  
**10 pcs / box (300)**  
 To be complete with TB14/TB20  
 Colour **B E**

**KSI 200/300**



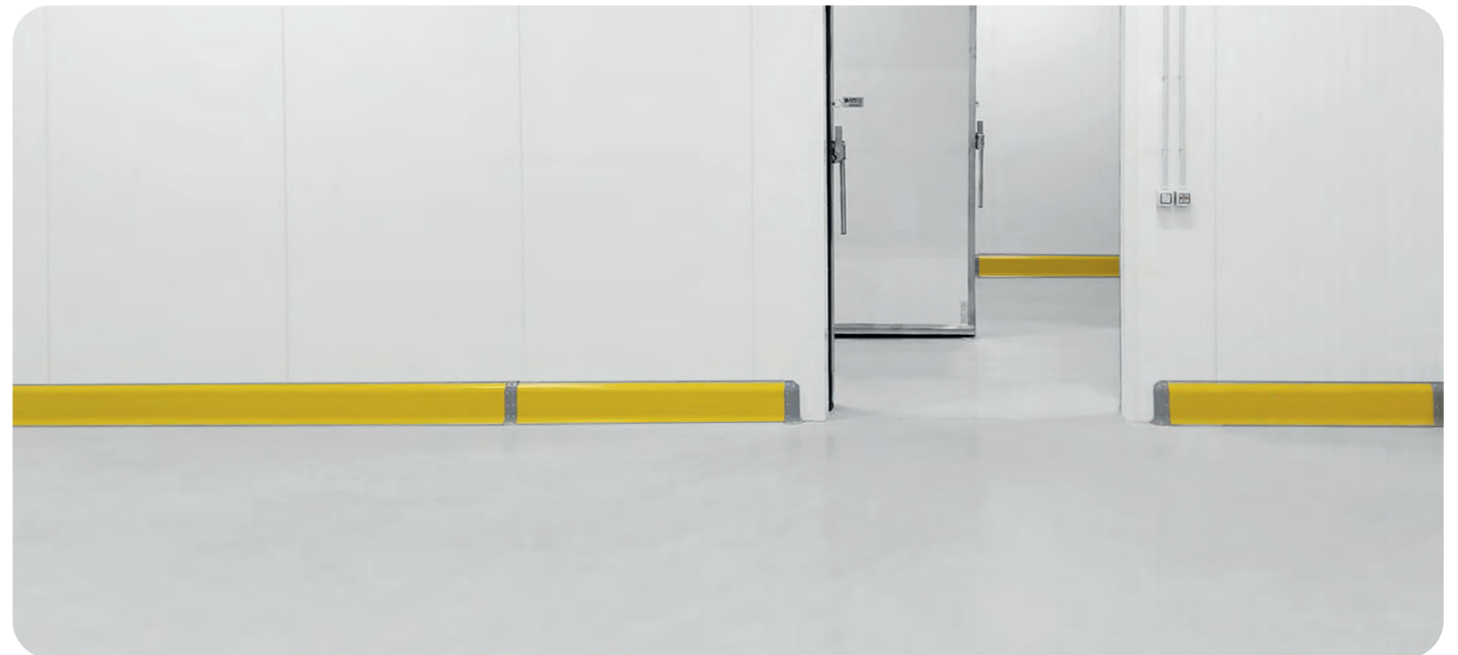
Height **200 mm**  
**300 mm**  
 Packing **20 pcs / box (200)**  
**10 pcs / box (300)**  
 To be complete with TB14/TB20  
 Colour **B E**

**KSJ 200 LT**



Height **200 mm**  
 Packing **20 pcs / box**  
 To be complete with TB14/TB20  
 Colour **K**

**FOR LOW TEMPERATURES**



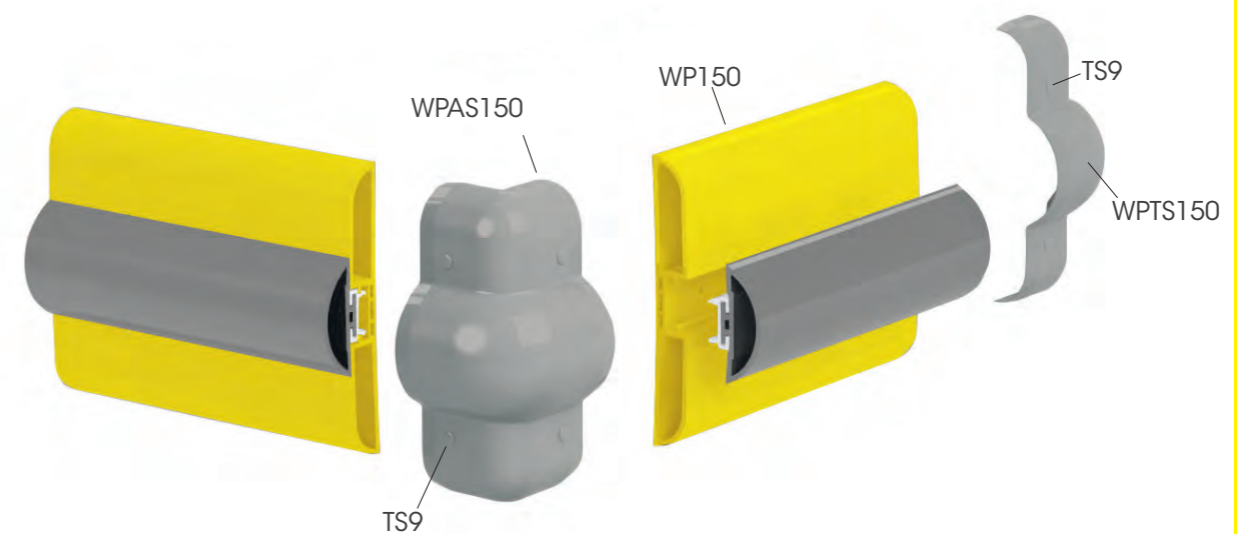


Solutions designed to protect walls in all industrial spaces. Available with fixed caps with hidden fixings to ensure high hygiene.

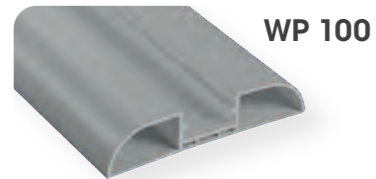
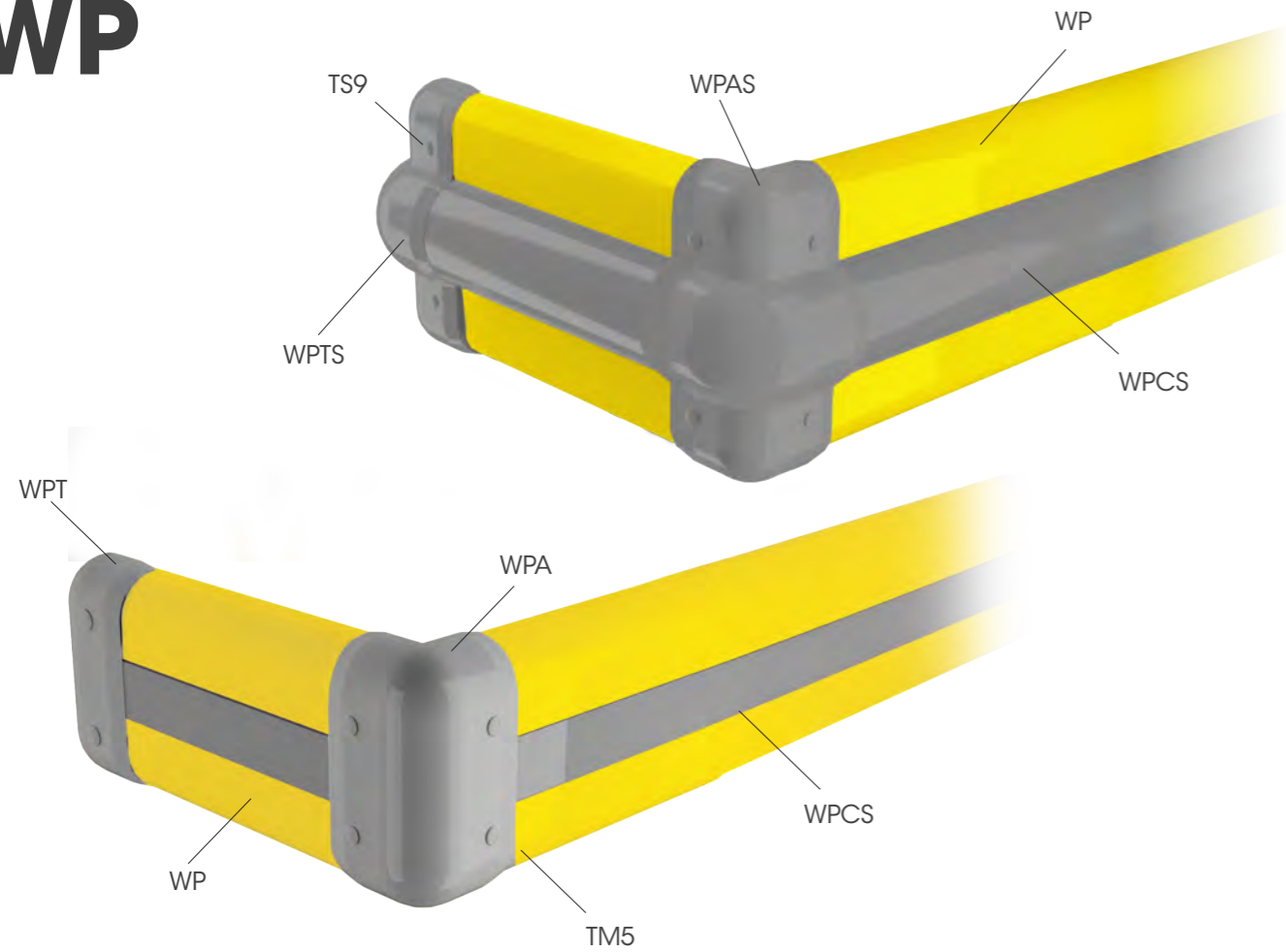
Soluzioni progettate per proteggere le pareti in tutti gli spazi industriali. Disponibili con tappi fissi e fissaggi nascosti per garantire un'igiene elevata.

Solutions conçues pour protéger les murs dans tous les espaces industriels. Disponibles avec des bouchons fixes et des fixations cachées pour assurer une hygiène élevée.

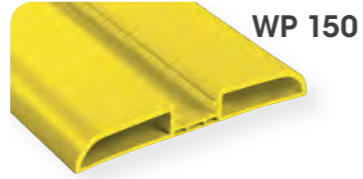
Soluciones diseñadas para proteger paredes en todos los espacios industriales. Disponibles con tapas fijas y fijaciones ocultas para garantizar una alta higiene.



# WP



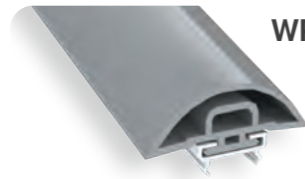
**WP 100**  
 Length 4.000 mm  
 Height 100 mm  
 Depth 21 mm  
 Packing 8 pcs / box  
 Colour B E F



**WP 150**  
 Length 4.000 mm  
 Height 150 mm  
 Depth 21 mm  
 Packing 4 pcs / box  
 Colour M B E



**WPC**  
 Length 4.000 mm  
 Height 27 mm  
 Depth 13 mm  
 Packing 16 pcs / box  
 Colour A B M D E F G H



**WPCS**  
 Length 4.000 mm  
 Height 62 mm  
 Depth 22 mm  
 Packing 8 pcs / box  
 Colour A B M D E F G H I



**WPT 100/150**  
 Height 100, 150 mm  
 Width 22, 52 mm  
 Packing 50 pcs / box  
 To be completed with TM5  
 Colour B E



**WPTS 100/150**  
 Height 100, 150 mm  
 Packing 20 pcs / box  
 To be completed with TS9  
 Colour B E

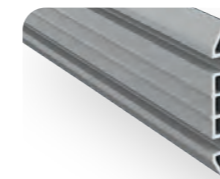
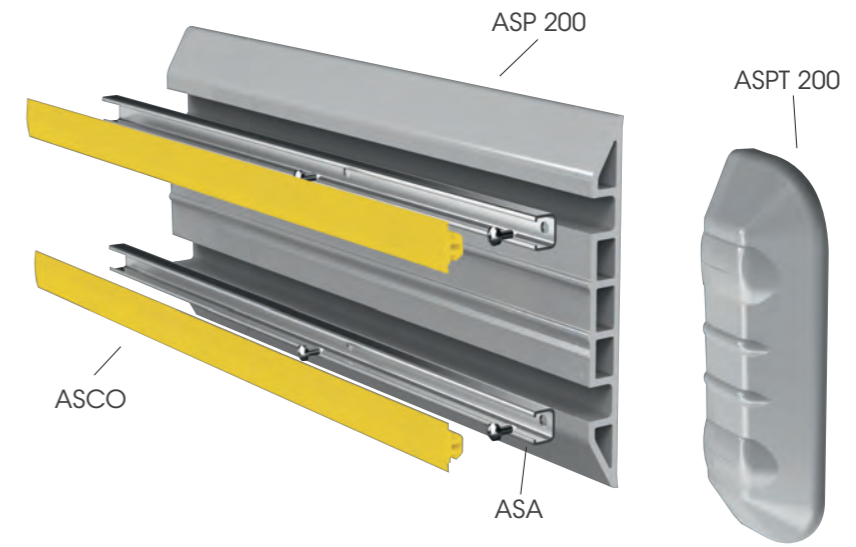


**WPA 100/150**  
 Height 100, 150 mm  
 Packing 20 pcs / box  
 To be completed with TS9  
 Colour B E

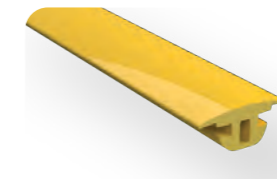


**WPAS 100/150**  
 Height 100, 150 mm  
 Packing 20 pcs / box  
 To be completed with TS9  
 Colour B E

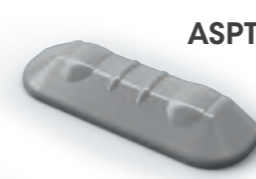
# ASP



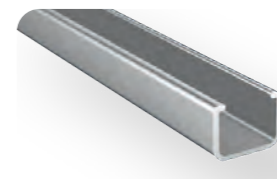
**ASP 200**  
 Length 4.000 mm  
 Height 200 mm  
 Depth 20 mm  
 Packing 2 pcs / box  
 Colour M B



**ASCO**  
 Length 32.000 mm  
 Height 25 mm  
 Packing 2 pcs / box  
 Colour A B M D G

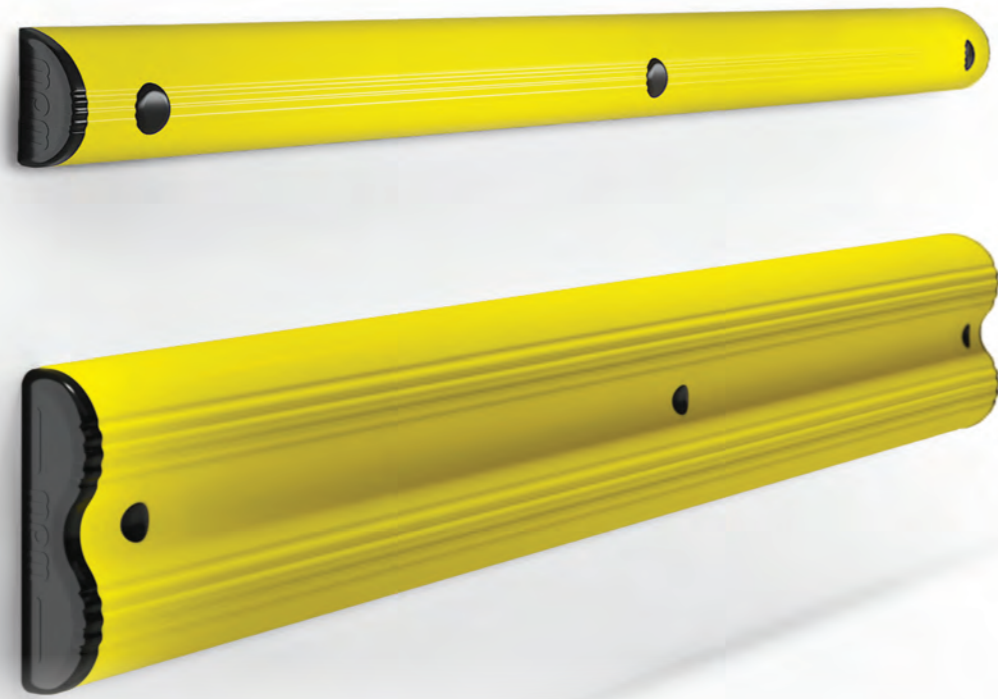


**ASPT 200**  
 Height 200 mm  
 Packing 10 pcs / box  
 Colour B D



**ASA**  
 Material Aluminium  
 Length 4.000 mm  
 Height 13,5 mm  
 Width 18 mm  
 Packing 8 pcs / bundle



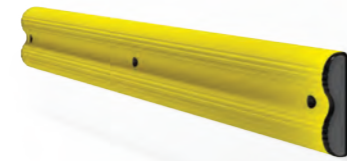


**WALL HUG**



Light Load  
 Length **1,000, 2,000, 3,000, 4,000 mm**  
 Height **130 mm**  
 Depth **70 mm**  
 Fixing **Not included**  
 Colour **●**

**WALL BFLEX**

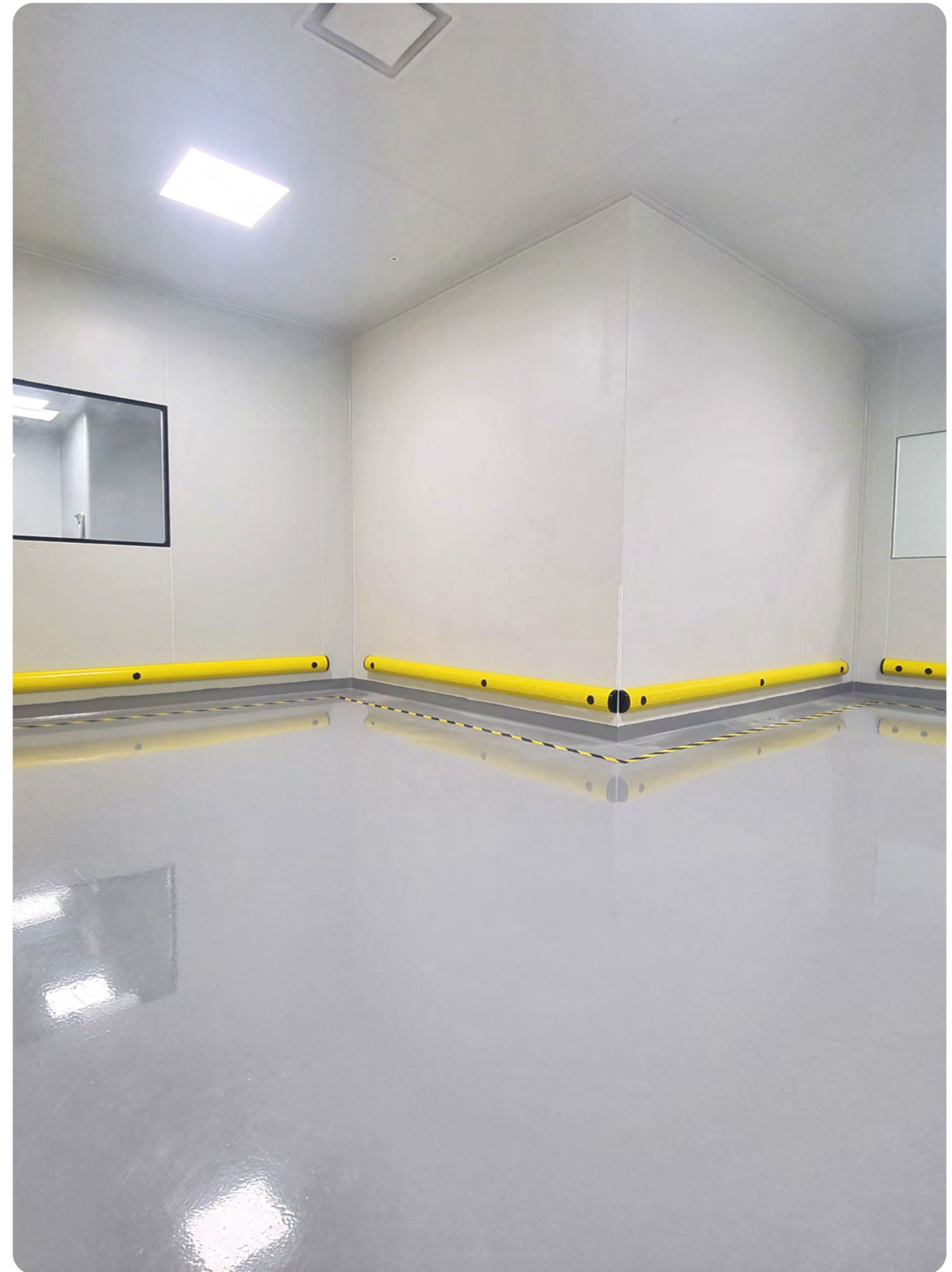


Light Load  
 Length **1,000, 2,000, 3,000, 4,000 mm**  
 Height **300 mm**  
 Depth **80 mm**  
 Fixing **Not included**  
 Colour **●**

**WALL BFLEX MODULAR**



Light Load  
 Height **300 mm**  
 Depth **80 mm**  
 Standard Module **1000 - 2000mm (250 Increments)**  
 Fixing **Not included**  
 Colour **●**





MPM accessories are designed to create a safe working environment.

Gli accessori MPM sono ideati per creare un ambiente di lavoro sicuro.

Les accessoires MPM sont conçus pour créer un environnement de travail sûr.

Los accesorios MPM están diseñados para crear un entorno de trabajo seguro.



# VISIBOARD



VISIBOARD




Sign Ø 200 mm  
Width 240 mm



VISIPOLE



 Heavy Load  
Height 1500 mm  
Colour ● ●



# SOFT BOLLARD

SOFT BOLLARD



Height 770 mm  
Fixing On Request  
Colour ● ● ●



**NEW**

# RETRACTABLE BELT

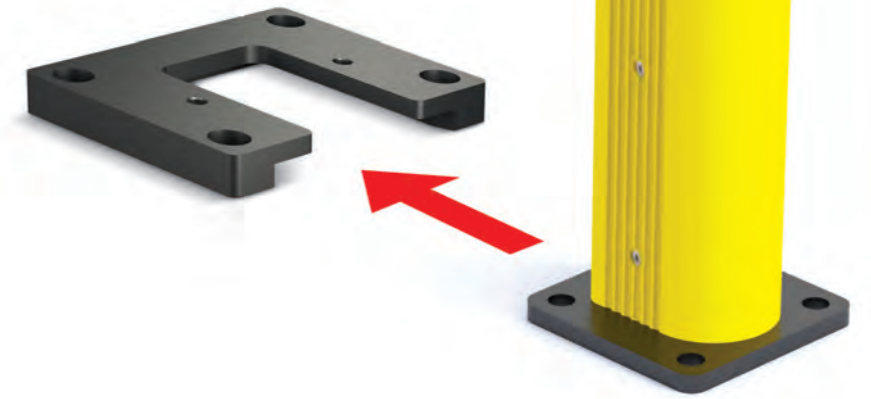


RETRACTABLE BELT



Belt Length **8.000 mm**  
Color **RAL 1004**

# REMOVABLE PLATE



KIT 90 RE COVER



Height **22 mm**  
Width **182 mm**  
Depth **136 mm**  
Available For: **SM / FENCE 90 / HR / PED 90 / GRD 90 / LINK 120**

KIT 150 RE COVER



Height **24 mm**  
Width **242 mm**  
Depth **176 mm**  
Available For: **LM / FENCE 150 / PED 150 / GRD 150 / LINK 150**



# CLIP 90



CLIP 90



Length 300 mm  
 Suitable LM, PED 150, TOWER PROTECTIONS, DP 150, SWING GATE  
 Colour ● ● ● ●

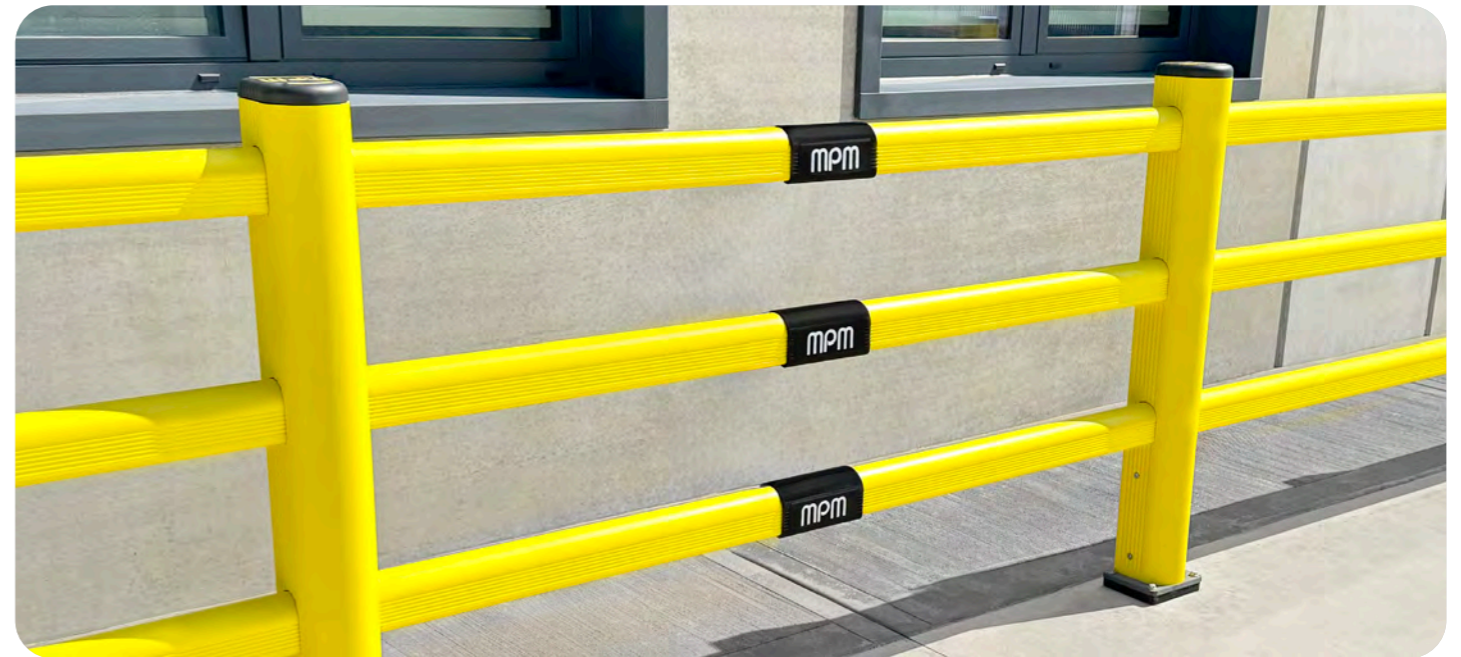
# CLIP 90 CUSTOM



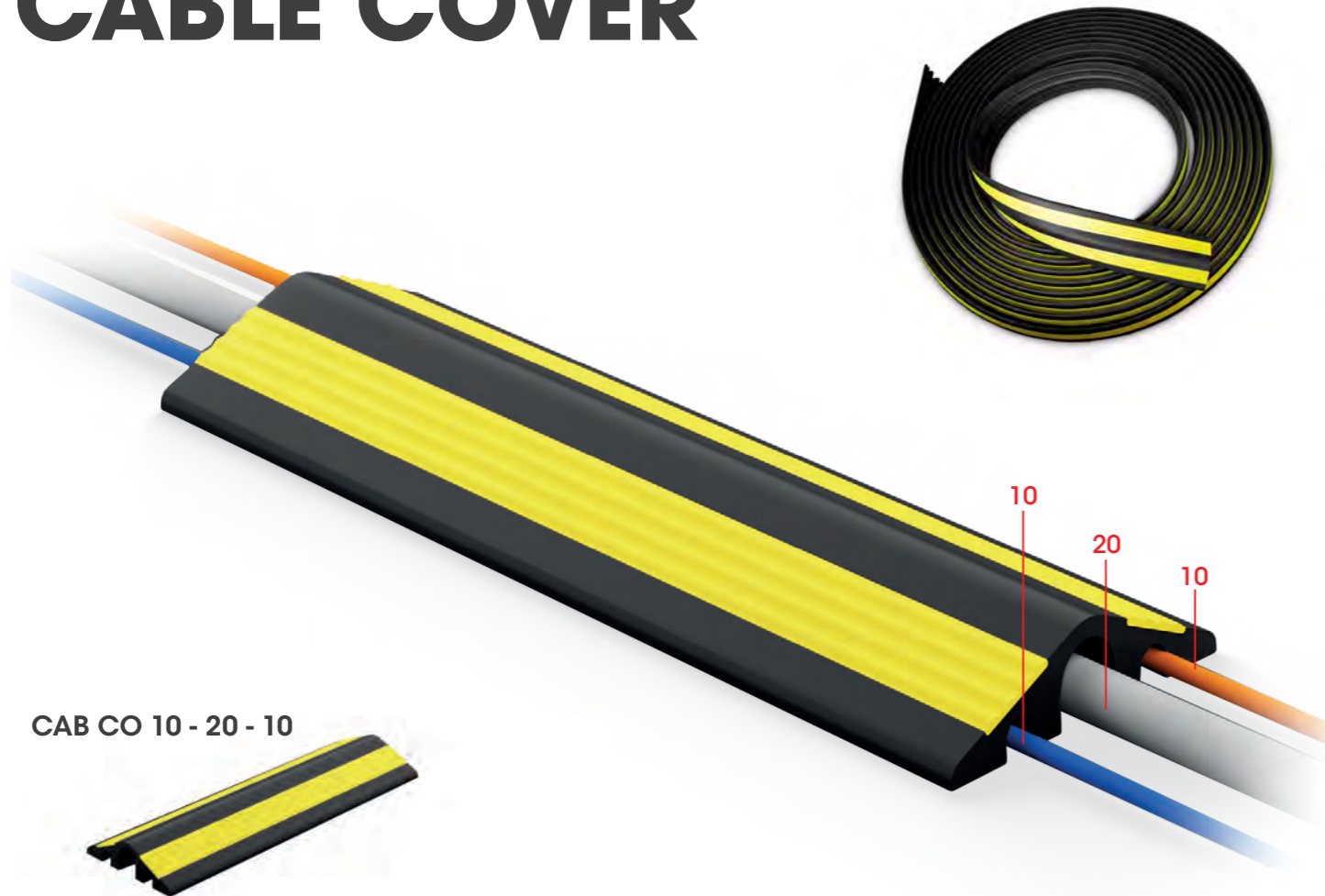
CLIP 90 CUSTOM



Length 200 mm  
 Suitable LM, PED 150, TOWER PROTECTIONS, DP 150, SWING GATE  
 Colour ●



# CABLE COVER



**CAB CO 10 - 20 - 10**



Length 1.000, 10.000 mm  
 Packing 8 pcs / box (1.000 mm)  
 1 pcs / box (10.000 mm)



# GENIUS

THE LENGTH THAT YOU WISH

## CUT THE RAIL AND DRILL IT

Do you need to modify the length of your protections?

With our innovative Genius system, you can customize your barriers according to your needs.

Vuoi modificare la lunghezza delle tue protezioni?

Con il nostro innovativo sistema Genius potrai personalizzare le tue barriere, in base alle tue esigenze.

Besoin de modifier la longueur de vos protections?

Avec notre système innovant Genius, vous pouvez personnaliser vos barrières selon vos besoins.

¿Necesitas modificar la longitud de tus protecciones?

Con nuestro innovador sistema Genius, puedes personalizar tus barreras según tus necesidades.



# WORLD'S UNIQUE SYSTEM!

**YOUR CUSTOMIZED BARRIER**

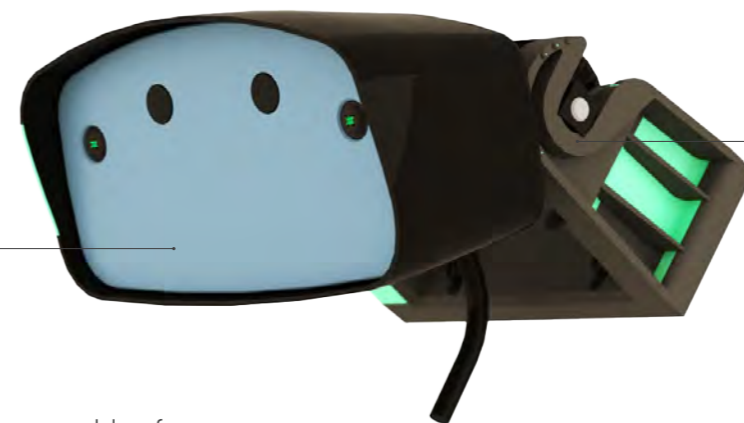


Innovation never stops.  
Our R&D department has been working on new solutions that will greatly aid you in the creation of a safer warehouse. Smart solutions are the future of safety!

L'innovazione non si ferma mai.  
Il nostro reparto Ricerca e Sviluppo sta lavorando su nuove soluzioni che vi aiuteranno notevolmente nella creazione di un magazzino più sicuro. Le soluzioni intelligenti sono il futuro della sicurezza!

L'innovation ne s'arrête jamais.  
Notre département R&D travaille sur de nouvelles solutions qui vous aideront grandement dans la création d'un entrepôt plus sûr. Les solutions intelligentes sont l'avenir de la sécurité!

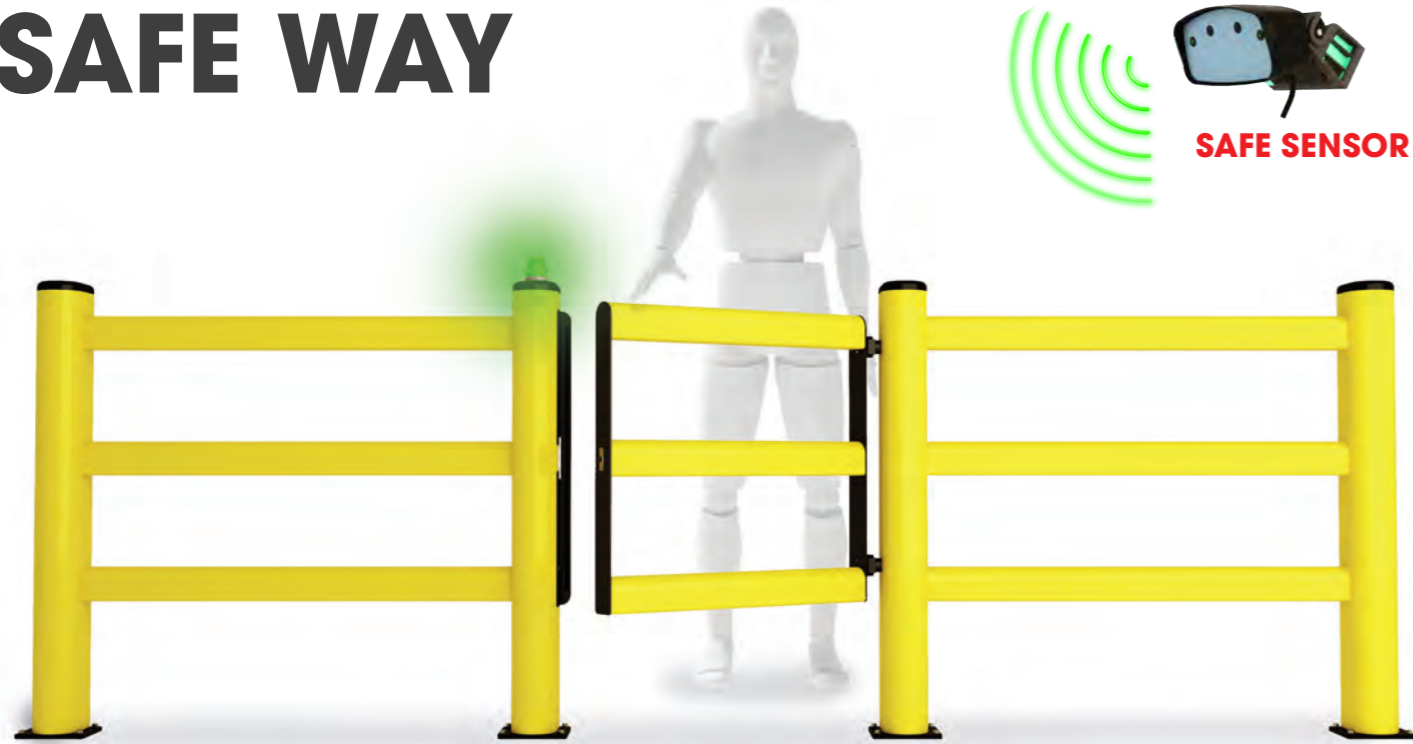
La innovación nunca se detiene.  
Nuestro departamento de I+D ha estado trabajando en nuevas soluciones que te serán de gran ayuda en la creación de un almacén más seguro. ¡Las soluciones inteligentes son el futuro de la seguridad!



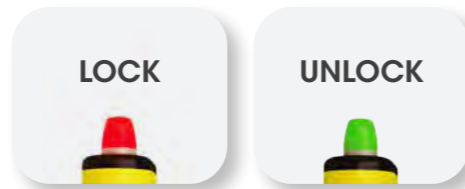
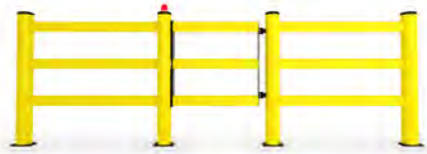
Sensors capable of detecting incoming traffic and distinguishes vehicles from pedestrians.

Simple and very efficient system to avoid collisions and save lives

# SAFE WAY



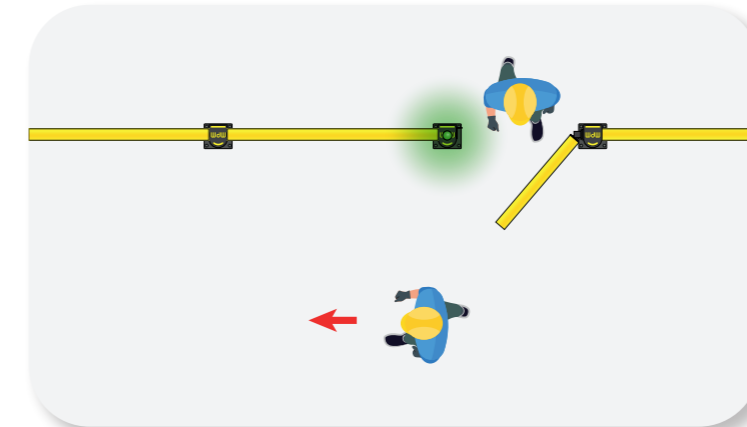
## DP 150 SAFE WAY



- Width **Min 400 mm - Max 1.000 mm (50 increments)**
- Fixing **Included**
- Colour



# SAFE WAY IS THE RIGHT WAY

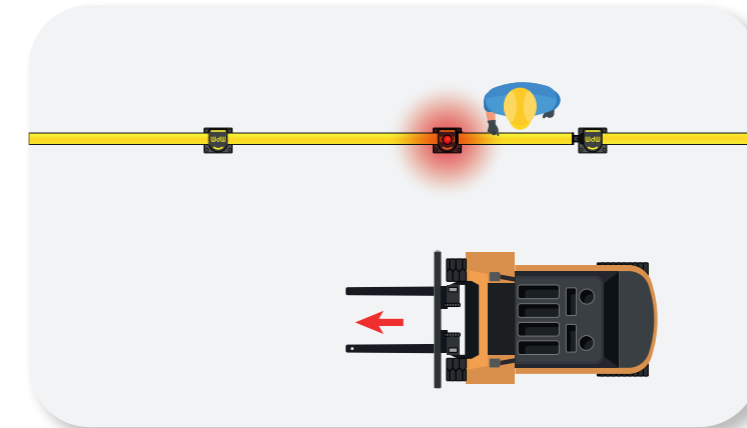


Safe Way determines if the crossing is safe and distinguishes vehicles from pedestrians.

Safe Way determina se l'attraversamento è sicuro e distingue i veicoli dai pedoni

Safe Way détermine si la traversée est sécurisée et distingue les véhicules des piétons.

Safe Way determina si el cruce es seguro y distingue los vehiculos de los peatones.

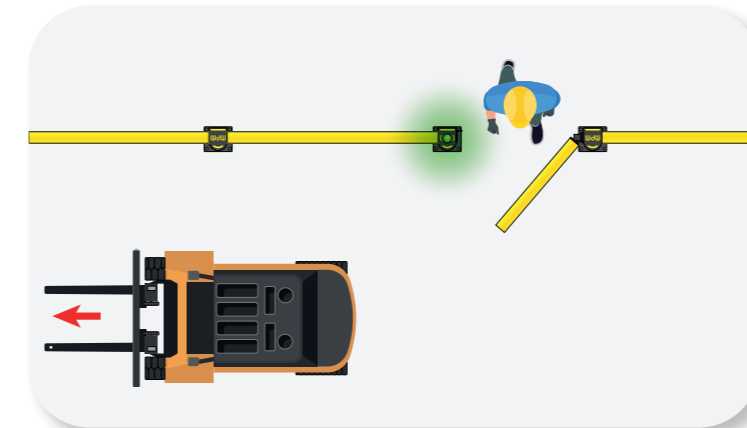


It stops when it detects oncoming vehicular traffic.

Si blocca quando rileva traffico veicolare in arrivo.

Il s'arrête lorsqu'il détecte la circulation automobile arrivante.

Se detiene cuando detecta tráfico vehicular entrante.



Safe Way allows passage when the vehicle no longer poses a danger.

Safe Way consente il passaggio quando il veicolo non rappresenta più un pericolo

Safe Way permet le passage lorsque le véhicule ne représente plus un danger.

Safe Way permite el paso cuando el vehículo ya no representa un peligro.

The sensor detects vehicle traffic coming from only one direction; to monitor multiple directions, additional sensors must be installed.

Il sensore rileva il traffico veicolare proveniente da una sola direzione; per monitorare più direzioni è necessario installare più sensori.

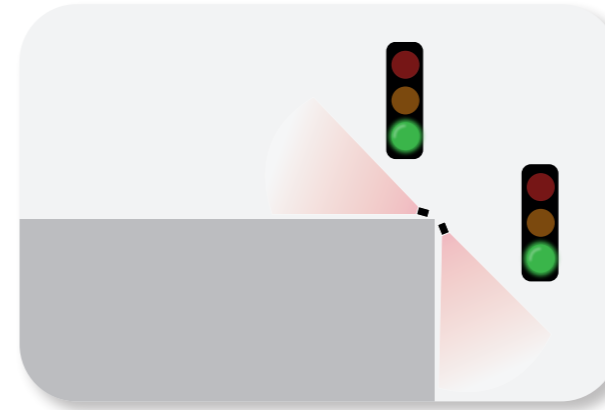
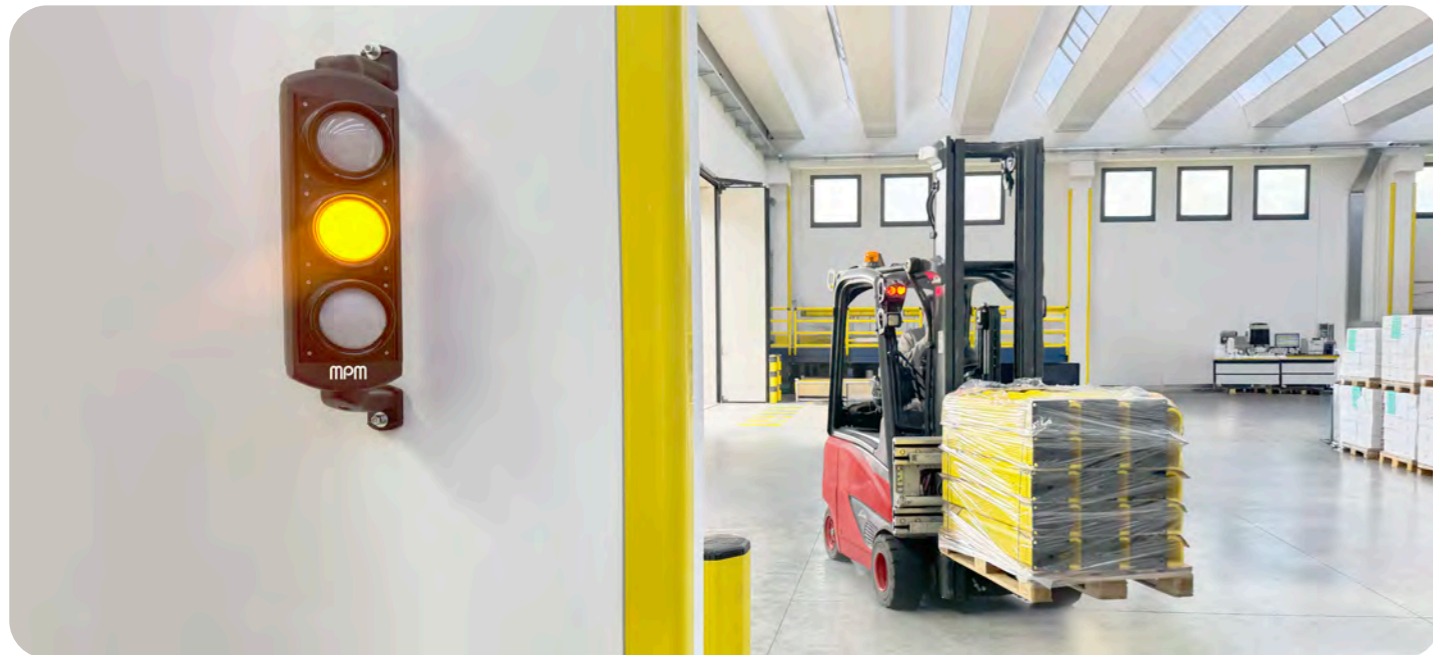
Le capteur détecte le trafic routier provenant d'une seule direction ; pour surveiller plusieurs directions, il est nécessaire d'installer plusieurs capteurs.

El sensor detecta el tráfico vehicular proveniente de una sola dirección; para controlar varias direcciones es necesario instalar más sensores.

# SAFE LIGHT



Height **715 mm**  
 Width **150 mm**  
 Depth **235 / 310 mm**

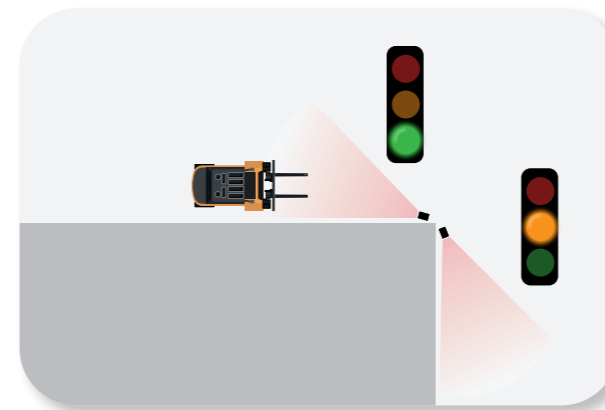


In the absence of traffic, the light remains green.

In assenza di traffico, il semaforo rimane verde.

En l'absence de circulation, le feu reste vert.

En ausencia de tráfico, el semáforo permanece en verde.

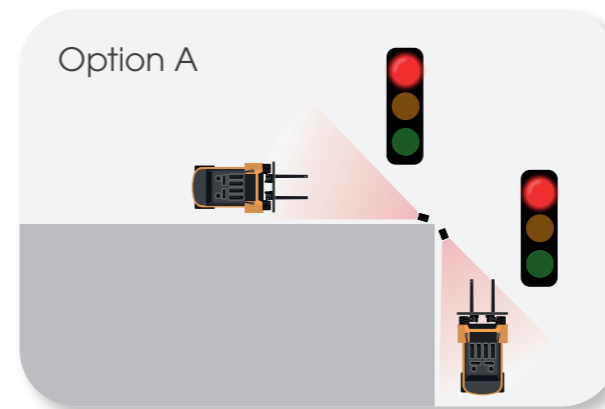


If a vehicle approaches, the opposite light turns yellow.

Se un veicolo sopraggiunge, il semaforo opposto passa al giallo.

Si un véhicule arrive, le feu opposé passe à l'orange.

Si un vehículo se aproxima, el semáforo opuesto pasa a amarillo.



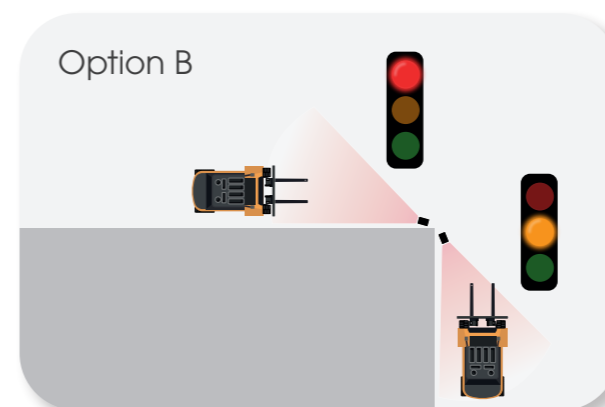
Option A

When two vehicles arrive from both directions, the traffic lights turn red and an audible signal is emitted.

Quando due veicoli arrivano da entrambe le direzioni, i semafori diventano rossi e viene emesso un segnale acustico.

Lorsque deux véhicules arrivent en même temps dans les deux sens, les feux passent au rouge et un signal sonore retentit.

Quando dos vehículos llegan desde ambas direcciones, los semáforos se ponen en rojo y se emite una señal acústica.



Option B

When two vehicles arrive, the traffic light turns yellow for the first and red for the second. An audible signal is also emitted.

Quando arrivano due veicoli, il semaforo diventa giallo per il primo e rosso per il secondo. Inoltre viene emesso un segnale acustico.

À l'arrivée de deux véhicules, le feu passe au jaune pour le premier et au rouge pour le second. Un signal sonore est également émis.

Al llegar dos vehículos, el semáforo se pone en amarillo para el primer y en rojo para el segundo. Además, se emite una señal acústica.

## Fixing accessories



**S12 - S16 - S20**  
HILTI  
Hole required Ø 10-14-16  
Galvanized steel.



**M12 - M16**  
HILTI  
Hole required Ø 12-16  
Galvanized steel.



**B12 - B16 - B20**  
HILTI  
Hole required Ø 22-28-32  
Galvanized steel.



**S8FH - S12FH**  
HILTI  
Hole required Ø 6-10  
Galvanized steel.  
Countersunk.



**SF12 - SF16 - SF20 INOX**  
Hole required Ø 14-18-24  
Stainless steel.



**M12 - M16 INOX**  
Hole required Ø 12-16  
Stainless steel.



**KIT ROD 70-120**  
HILTI  
Hole required Ø 38-56  
Galvanized steel.



**KIT ROD 70-120 INOX**  
HILTI  
Hole required Ø 38-56  
Galvanized steel.



**AA12 - AA16**  
Hole required Ø 22-22  
Galvanized steel.  
For asphalt.



**ASPHALT CHEMICAL**  
CHEMICAL ANCHOR  
585 ML



**FR**  
HILTI CHEMICAL ANCHOR  
300 ML



**WIT NORDIC**  
CHEMICAL ANCHOR  
420 ML  
(Installation in working cold rooms  
with negative temperatures)

In collaboration with



MPM srl reserves the right, at any time, to introduce the necessary changes and improvements to its products.  
Any small imperfection in the products and in the materials used are due to the processing method.  
Any reproduction of this brochure, even in part, is forbidden.

## Fixing accessories



**TM5**  
Hole required Ø 8.5  
Neutral polyethylene. 100/500 Pcs. / bag.



**TS9**  
Hole required Ø 5  
White or grey nylon. 1000 Pcs. / bag.



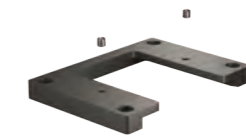
**TH**  
ABS.  
100 Pcs./ bag.  
RAL 9010 / 9002 / 9006 / 7040 / 7024 / Transparent.



**TX12**  
ABS.  
100 Pcs./ bag.  
RAL 7035 / 9010



**TB14 - TB20**  
Hole required Ø 4-5  
Steel / aluminium (white for ø 4)  
1000 Pcs. / box.



**COVER 150 RE**  
Galvanized steel and painted.



**FIX P90**  
Galvanized steel and painted.



**COVER 90 RE**  
Galvanized steel and painted.



**FIX P90 INOX**  
Stainless steel.



**FIX P150**  
Galvanized steel and painted.



**FIX P150 FH**  
Galvanized steel and painted.  
Countersunk.



**FIX P150 INOX**  
Stainless steel.



**SHOCK ABSORBER PAD**  
Soft material, optional for FIXP150.  
(To be installed with S12x150)



**FULL FRAME BASE**  
Galvanized steel and painted.

## Colours



MPM srl reserves the right, at any time, to introduce the necessary changes and improvements to its products.  
Any small imperfection in the products and in the materials used are due to the processing method.  
Any reproduction of this brochure, even in part, is forbidden.

Products marked with the symbol are recommended for indoor use, as prolonged UV exposure may cause discoloration.



SOME OF OUR REFERENCES



THE WORLD'S TOP **LOGISTICS**  
 PROFESSIONALS CHOOSE OUR  
**QUALITY MADE IN ITALY**



# CERTIFICATION



The TÜV SÜD certification was re-confirmed for rack protectors, 100% designed and manufactured by MPM in compliance with European standard EN 15512; Obtaining the TÜV SÜD certification is the confirmation of the company's commitment to the pursuit of qualitative excellence in its products.

Riconfermata la certificazione TÜV SÜD per le protezioni per scaffalature ideate e prodotte da MPM in conformità con la normativa europea EN 15512; L'ottenimento della certificazione TÜV SÜD è la conferma dell'impegno dell'azienda nella ricerca dell'eccellenza qualitativa dei propri prodotti.

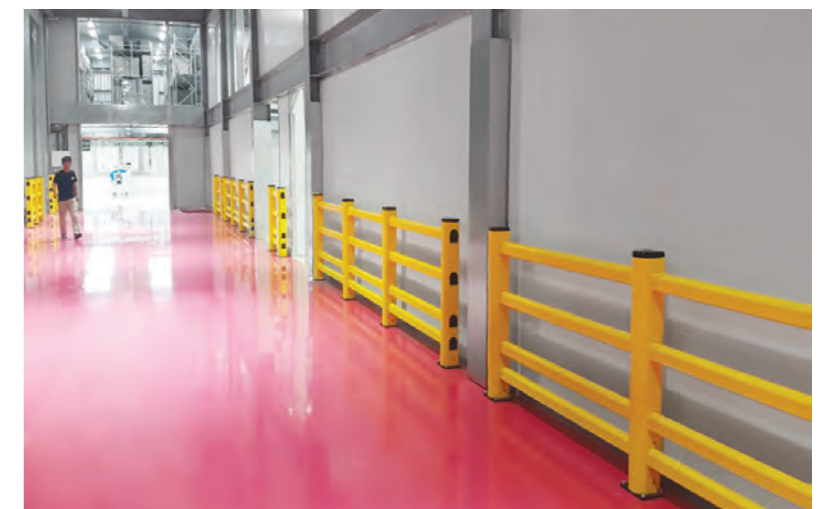
La certification TÜV SÜD, attribuée aux protections des montants conçues et fabriquées par MPM conformément à la norme européenne EN 15512, a été reconfirmée. L'obtention de la certification TÜV SÜD confirme bien l'engagement de l'entreprise dans la recherche de l'excellence qualitative de ses produits.

Se confirma nuevamente la certificación TÜV SÜD para las protecciones montadas, diseñadas y fabricadas por MPM de acuerdo con la Norma europea EN 15512; La certificación TÜV SÜD confirma el compromiso de la empresa en la búsqueda de una calidad excelente de sus productos.

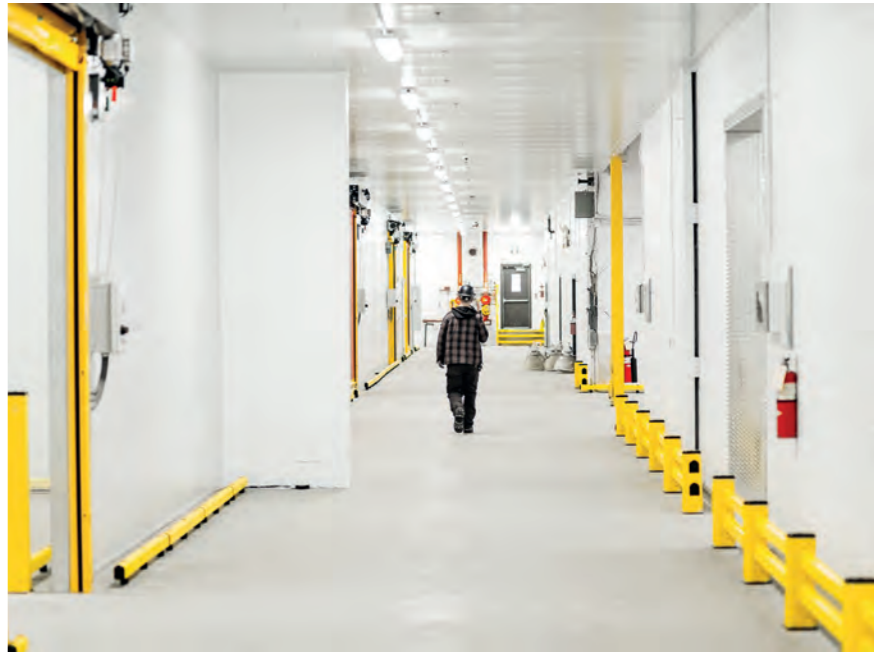
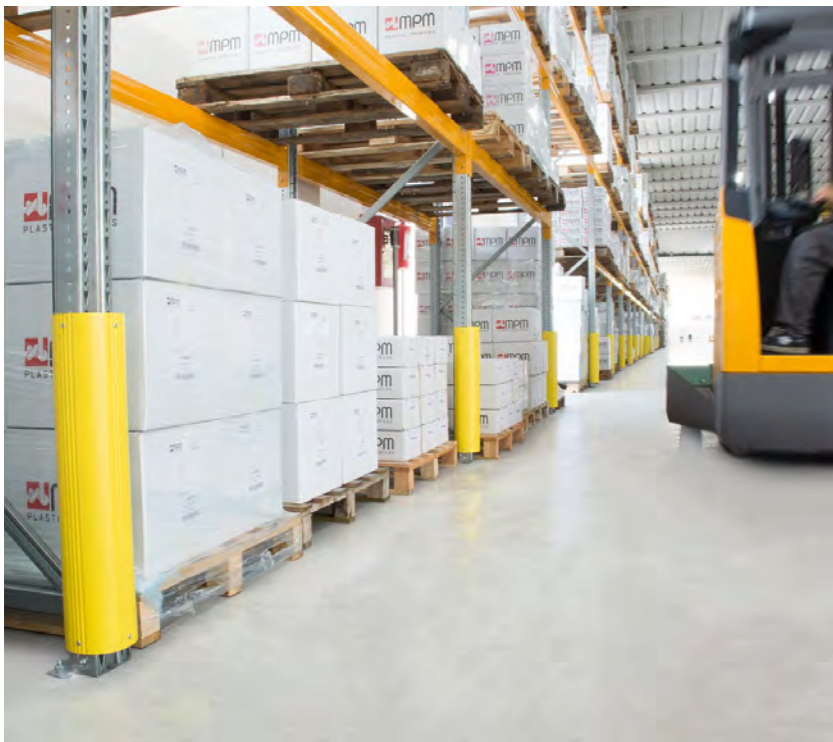
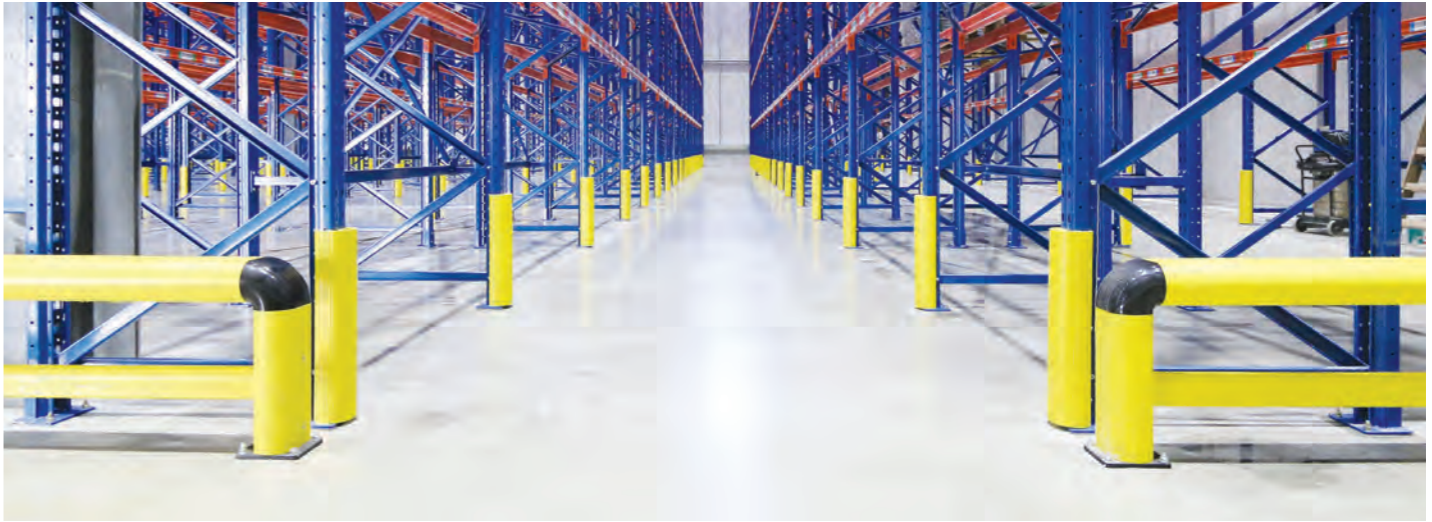
## OUR CERTIFIED PRODUCTS:

**RP, RACK CORNER, LM, GRD 150, GRIN 150**

# OUR INSTALLATIONS



# OUR INSTALLATIONS



# OUR INSTALLATIONS



# OUR INSTALLATIONS



MPM states that:

The safety coefficient and consequent use of the products requires the compliance with the appropriate assembling and installation instructions as defined in the technical catalogue on the corporate website [www.mpmprotections.com](http://www.mpmprotections.com). Therefore, before buying and installing MPM solutions please consult the technical documentation provided by MPM.

Impact resistances indicated in the brochure, or in other documents, refer to laboratory tests and cannot take into account consequences determined by installation methods or peculiarities of the place where the products are installed. In an operational environment there is an almost infinite amount of variables, atmospheric condition, chemical conditions, salinity, exposure to UV light, vehicle type, speed and mass, routes, angles of impact, pedestrian routes, pedestrian behavior, catastrophic events, ground conditions and anchorage.

The data refers to an intact product which length is indicated on the test report and it can be affected by alterations from incorrect maintenance, wear and tear, as well as the methods and characteristics of installation (with specific reference to floor-mounted products); the weight, dimensions, colors and characteristics of the material refer to the sample and the conformity with the latter of the product supplied will be subject to normal production tolerance.

The warranty does not apply in the case of direct installation on asphalt without foundation plinths. Due to the particular nature and variety of this flooring, it is not possible to guarantee the impact resistance.

In addition, in the case of installation with foundation plinths on soil deemed unsuitable, the impact resistance cannot be guaranteed.

The height of the products hereby disclosed is calculated from the uppermost rail. Exception made only for LINK product lines. Length is calculated center to center. The product may be affected by uncontrollable environmental installation conditions. The standard operating temperature of MPM Flexible Protections is generally from +5 °C to +60 °C. For installations in low temperature environments up to -30 °C the alternative Frostex material should be required.

The fastness of the color and its brightness depend on wear and tear and weather conditions that can affect its intensity over time. For outdoor applications exposed to direct sunlight it is possible to choose the specific material Reflex Alpha or grey coloration.

Images in the brochure are for advertising purposes only and do not in any way represent how the products should be used. The images presented in this catalog are for commercial purposes and may not accurately correspond with the actual product. Small variations in color, design, and other features may occur. Full version of MPM products warranty available on corporate website [www.mpmprotections.com](http://www.mpmprotections.com)





MADE IN  
ITALY



#### HEADQUARTER

##### MPM FLEXIBLE PROTECTIONS

Via Europa 2 35010 Fratte di S.  
Giustina in Colle Padova · Italy  
T +39 049 9301773  
info@mpmpvc.com  
[www.mpmprotections.com](http://www.mpmprotections.com)



##### MPM USA

444 N Michigan Ave  
Chicago, IL 60611  
info@mpmprotections.us  
[www.mpmprotections.us](http://www.mpmprotections.us)



##### MPM ESPAÑA

Av.da Eduardo Guitian, Num 11, Planta  
3, Oficina 3, 19002 Guadalajara  
T +34 949 146 001  
info@mpmprotections.es  
[www.mpmprotections.es](http://www.mpmprotections.es)



##### MPM DEUTSCHLAND

Hauptstraße 59  
23879 Mölln  
T +49 4542 853 65 80  
info@mpmdeutschland.de  
[www.mpmdeutschland.de](http://www.mpmdeutschland.de)



##### MPM FRANCE

9 Allée Irène Joliot Curie 69800  
SAINT PRIEST  
T +33 41 21 20 500  
info@mpmprotections.fr  
[www.mpmprotections.fr](http://www.mpmprotections.fr)



##### MPM POLSKA

Ul. Runowa 52  
Tychy 43-100  
T +48 500 465 569  
kontakt@mpmpolska.pl  
[www.mpmprotections.pl](http://www.mpmprotections.pl)



2026